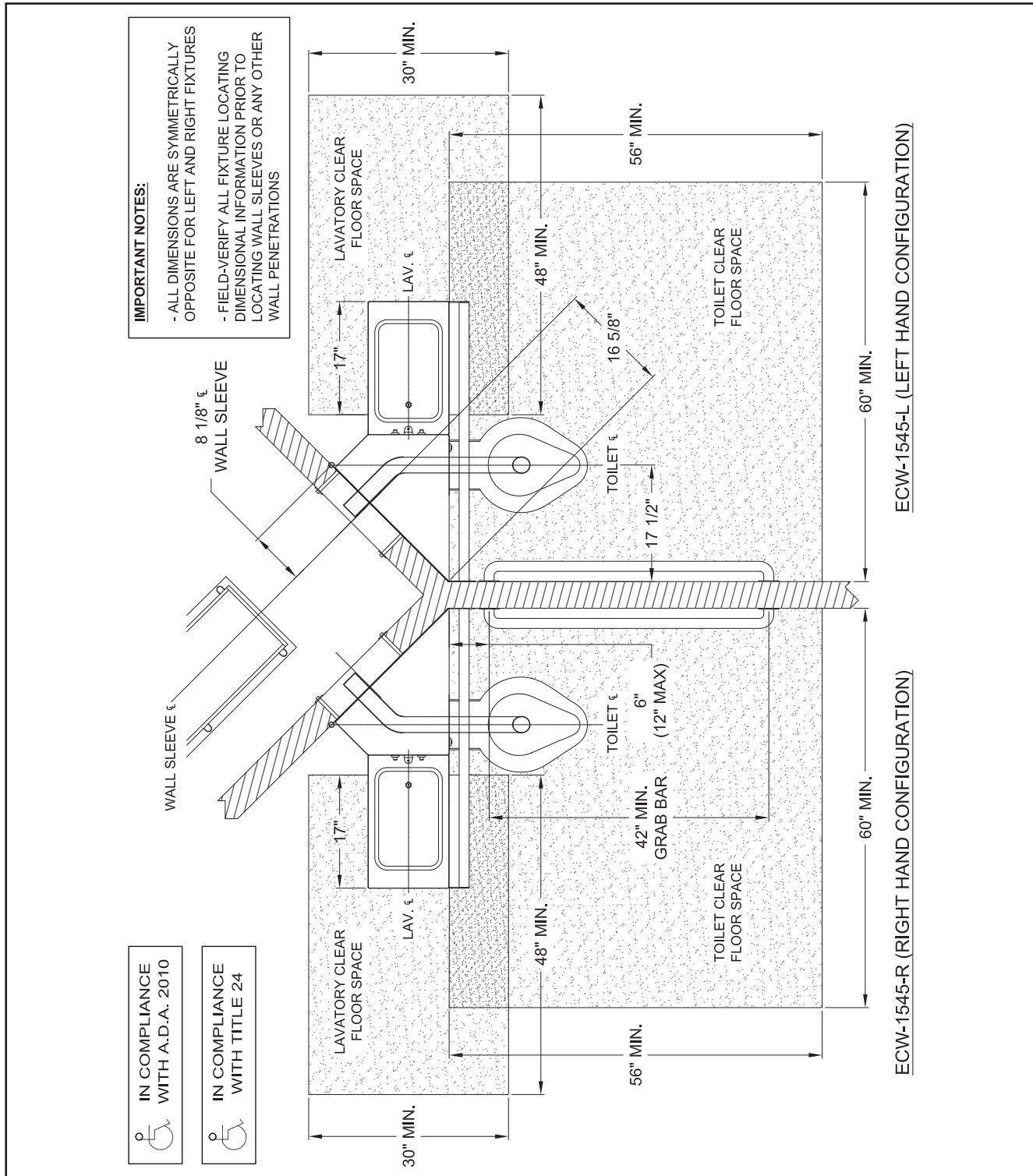


1545 Series Handicap Combination Unit Layout

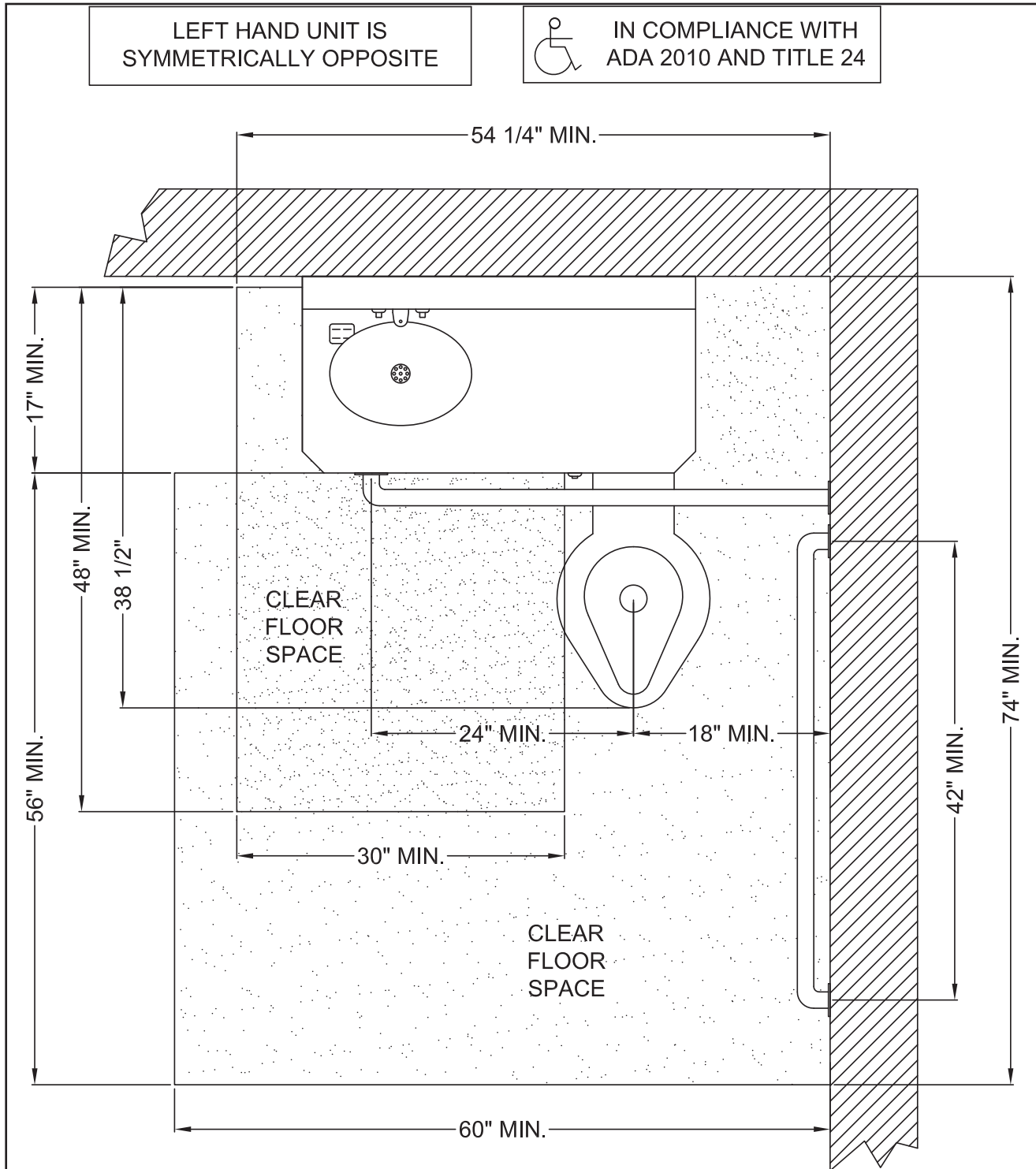


visit our website at www.willoughby-ind.com
 5105 West 78th Street • Indianapolis, IN. 46268
 (317) 875-0830 • Fax: (317) 875-0837 • (800) 428-4065



MADE IN THE U.S.A.

3696 Series
Handicap Combination Unit Layout

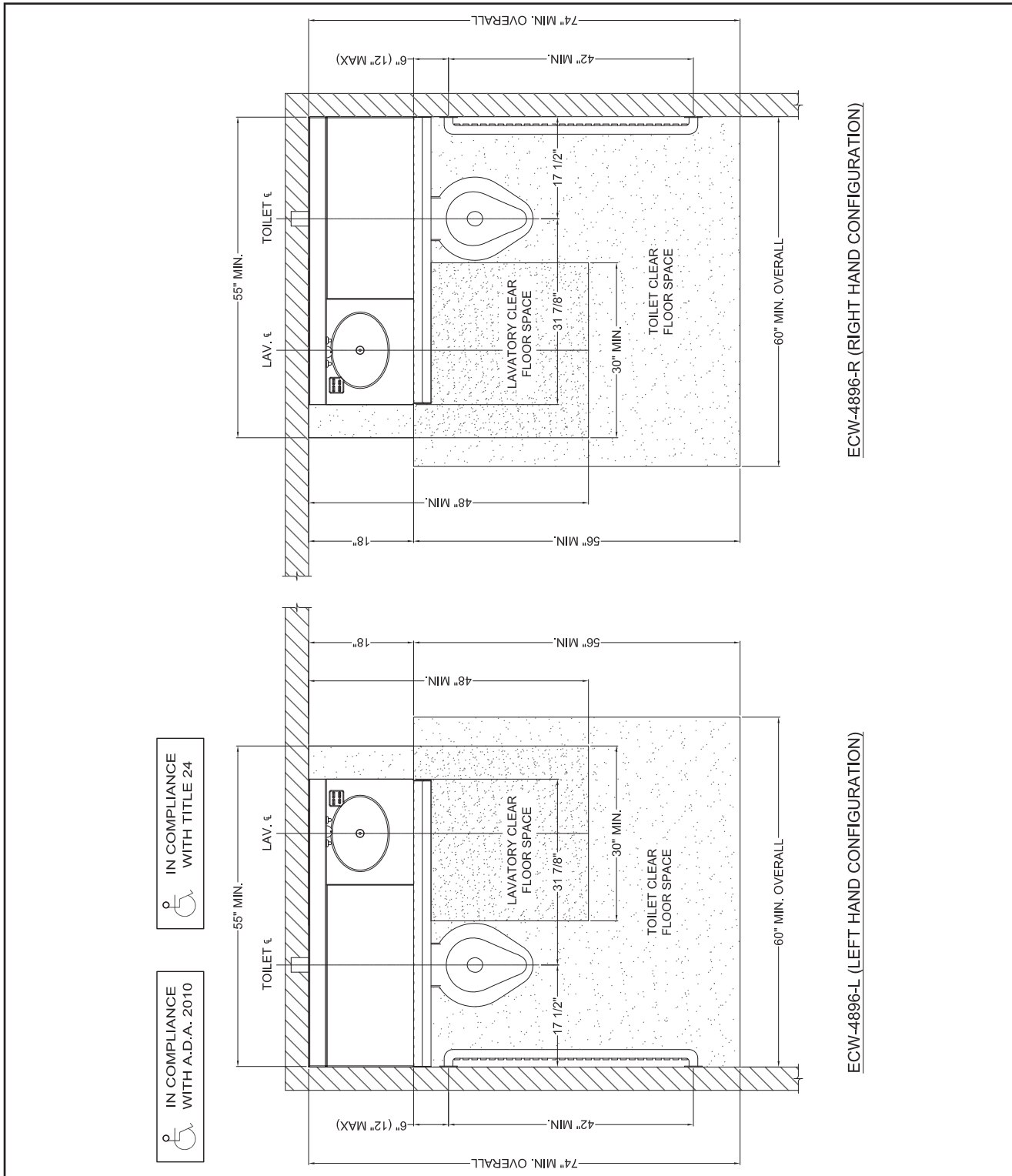


visit our website at www.willoughby-ind.com
5105 West 78th Street • Indianapolis, IN. 46268
(317) 875-0830 • Fax: (317) 875-0837 • (800) 428-4065



MADE IN THE U.S.A.

4896 Series
Handicap Combination Unit Layout



IN COMPLIANCE WITH TITLE 24

IN COMPLIANCE WITH A.D.A. 2010

ECW-4896-R (RIGHT HAND CONFIGURATION)

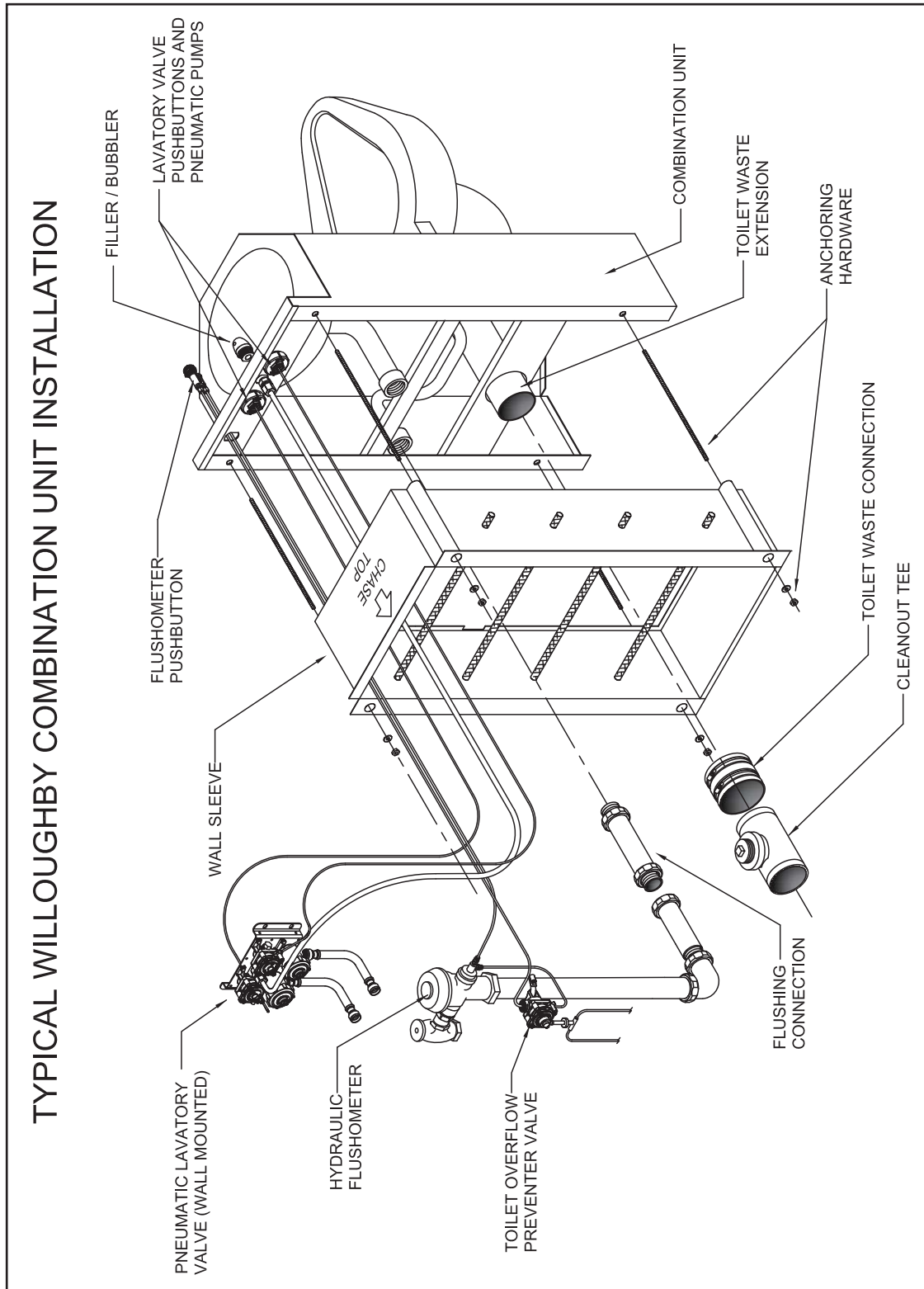
ECW-4896-L (LEFT HAND CONFIGURATION)

visit our website at www.willoughby-ind.com
 5105 West 78th Street • Indianapolis, IN. 46268
 (317) 875-0830 • Fax: (317) 875-0837 • (800) 428-4065



MADE IN THE U.S.A.

Typical Combination Unit Installation



visit our website at www.willoughby-ind.com
5105 West 78th Street • Indianapolis, IN. 46268
(317) 875-0830 • Fax: (317) 875-0837 • (800) 428-4065



MADE IN THE U.S.A.

Flush Valve Selection Chart

FLUSH VALVE	COMPATIBILITY CHART	MECH'L SLOAN	HYDRAULIC SLOAN	ACTUATOR	MECH'L ZURN	HYDRAULIC ZURN	MECH'L DELANY	HYDRAULIC DELANY
ECF-1546-C-ON	COMBINATION	603	9603	MBFW	Z-6603XL	ZH-6603XL	623	1223
ECF-1546-L/R-ON	COMBINATION	603	9603	MBFW	Z-6603XL	ZH-6603XL	623	1223
ECF-1846-C-ON	COMBINATION	603	9603	MBFW	Z-6603XL	ZH-6603XL	623	1223
ECF-1846-C-ON-FA	FRONT ACCESS COMBINATION	N/A	950	MBPM	N/A	ZH-6150XL	N/A	1233
ECF-1846-L/R-ON	COMBINATION	603	9603	MBFW	Z-6603XL	ZH-6603XL	603	1223
ECF-1846-L/R-ON-FA	FRONT ACCESS COMBINATION	N/A	950	MBPM	N/A	ZH-6150XL	N/A	1233
ECF-1897-L/R-ON	COMBINATION	603	9603	MBFW	Z-6603XL	ZH-6603XL	603	1223
ECF-1897-L/R-ON-FA	FRONT ACCESS COMBINATION	N/A	950	MBPM	N/A	ZH-6150XL	N/A	1233
ECF-2046-L/R-ON	COMBINATION	603	9603	MBFW	Z-6603XL	ZH-6603XL	603	1223
ECF-2046-L/R-ON-FA	FRONT ACCESS COMBINATION	N/A	950	MBPM	N/A	ZH-6150XL	N/A	1233
ECF-2696-L/R-ON	COMBINATION	603	9603	MBFW	Z-6603XL	ZH-6603XL	603	1223
ECF-2845-L/R-ON-FA-HC	HANDICAP COMBI W/ INTEGRAL, FLUSH VLV	N/A	950	MBPM	N/A	ZH-6150XL	N/A	1233
ECF-2897-L/R-ON-FA-HC	HANDICAP COMBI W/ INTEGRAL, FLUSH VLV	N/A	950	MBPM	N/A	ZH-6150XL	N/A	1233
ECW-1545-L/R-ON-HC	HANDICAP COMBINATION	603	9603	MBFW	Z-6603XL	ZH-6603XL	603	1223
ECW-1546-C-ON	COMBINATION	603	9603	MBFW	Z-6603XL	ZH-6603XL	603	1223
ECW-1546-C-F	COMBINATION	603	9603	MBFW	Z-6603XL	ZH-6603XL	603	1223
ECW-1546-L/R-ON	COMBINATION	603	9603	MBFW	Z-6603XL	ZH-6603XL	603	1223
ECW-1546-L/R-OF	COMBINATION	603	9603	MBFW	Z-6603XL	ZH-6603XL	603	1223
ECW-1846-C-ON	COMBINATION	603	9603	MBFW	Z-6603XL	ZH-6603XL	603	1223
ECW-1846-C-ON-FA	FRONT ACCESS COMBINATION	N/A	950	MBPM	N/A	ZH-6150XL	N/A	1233
ECW-1846-C-F	COMBINATION	603	9603	MBFW	Z-6603XL	ZH-6603XL	623	1223
ECW-1846-L/R-ON	COMBINATION	603	9603	MBFW	Z-6603XL	ZH-6603XL	623	1223
ECW-1846-L/R-ON-FA	FRONT ACCESS COMBINATION	N/A	950	MBPM	N/A	ZH-6150XL	N/A	1233
ECW-1846-L/R-OF	COMBINATION	603	9603	MBFW	Z-6603XL	ZH-6603XL	623	1223
ECW-1897-L/R-ON	COMBINATION	603	9603	MBFW	Z-6603XL	ZH-6603XL	623	1223
ECW-1897-L/R-ON-FA	FRONT ACCESS COMBINATION	N/A	950	MBPM	N/A	ZH-6150XL	N/A	1233
ECW-1897-L/R-OF	COMBINATION	603	9603	MBFW	Z-6603XL	ZH-6603XL	623	1223
ECW-2046-L/R-ON	COMBINATION	603	9603	MBFW	Z-6603XL	ZH-6603XL	623	1223
ECW-2046-L/R-ON-FA	FRONT ACCESS COMBINATION	N/A	950	MBPM	N/A	ZH-6150XL	N/A	1233
ECW-2046-L/R-OF	COMBINATION	603	9603	MBFW	Z-6603XL	ZH-6603XL	623	1223
ECW-2696-L/R-OF	COMBINATION	603	9603	MBPM	N/A	ZH-6150XL	N/A	1233
ECW-3696-L/R-ON-FA-HC	HANDICAP COMBI W/ INTEGRAL, FLUSH VLV	N/A	950	MBPM	N/A	ZH-6150XL	N/A	1233
ECW-3696-L/R-OF-FA-HC	HANDICAP COMBI W/ INTEGRAL, FLUSH VLV	N/A	950	MBPM	N/A	ZH-6150XL	N/A	1233
ETF-1490-FM-BS	WATER CLOSET	611	9603	MBFW	Z-6611XL	ZH-6603XL	540	1240
ETF-1490-FM-BS-10"-FA	FRONT ACCESS WATER CLOSET	611	9603	MBFW	Z-6611XL	ZH-6603XL	540	1240

When specifying low flow toilets, the accompanying flush valve must be a low flow flush valve:

Delany low flow: add "1" suffix.

Sloan low flow: add ".1.6" suffix (Exception: for model #110-1.6, use model #111)

Zurn low flow: add "WS-1" suffix

visit our website at www.willoughby-ind.com

5105 West 78th Street • Indianapolis, IN. 46268

(317) 875-0830 • Fax: (317) 875-0837 • (800) 428-4065



MADE IN THE U.S.A.



Flush Valve Selection Chart (cont.)

FLUSH VALVE	COMPATIBILITY CHART	MECH'L SLOAN	HYDRAULIC SLOAN	ACTUATOR	MECH'L ZURN	HYDRAULIC ZURN	MECH'L DELANY	HYDRAULIC DELANY
ETF-1490-FM-BS-12"-FA	FRONT ACCESS COMBINATION	611	9603	MBFW	Z-6611XL	ZH-6603XL	540	1240
ETF-1490-FM-BS-FA	FRONT ACCESS COMBINATION	611	9603	MBFW	Z-6611XL	ZH-6603XL	540	1240
ETF-1490-FM-BS-HC	HANDICAP WATER CLOSET	611	9603	MBFW	Z-6611XL	ZH-6603XL	540	1240
ETF-1490-FM-BS-HC-FA	HANDICAP FRONT ACCESS WATER CLOSET	611	9603	MBFW	Z-6611XL	ZH-6603XL	540	1240
ETF-1490-FM-TS	WATER CLOSET	110	910	MBFW	Z-6606XL	ZH-6606XL	439	1239
ETF-1490-FM-TS-10"-FA	FRONT ACCESS WATER CLOSET	110	910	MBFW	Z-6606XL	ZH-6606XL	439	1239
ETF-1490-FM-TS-12"-FA	FRONT ACCESS WATER CLOSET	110	910	MBFW	Z-6606XL	ZH-6606XL	439	1239
ETF-1490-FM-TS-FA	FRONT ACCESS WATER CLOSET	110	910	MBFW	Z-6606XL	ZH-6606XL	439	1239
ETF-1490-FM-TS-HC	HANDICAP WATER CLOSET	110	910	MBFW	Z-6606XL	ZH-6606XL	439	1239
ETF-1490-FM-TS-HC-FA	HANDICAP FRONT ACCESS WATER CLOSET	110	910	MBFW	Z-6606XL	ZH-6606XL	439	1239
ETW-1445-FM-BS-HC-L/R	HANDICAP WATER CLOSET	N/A	9603	MBFW	Z-6611XL	ZH-6603XL	540	1240
ETW-1445-OF-BS-HC-L/R	HANDICAP WATER CLOSET	N/A	9603	MBFW	Z-6611XL	ZH-6603XL	540	1240
ETW-1490-CM-BS	WATER CLOSET	611	9603	MBFW	Z-6611XL	ZH-6603XL	540	1240
ETW-1490-CM-TS	WATER CLOSET	110	910	MBFW	Z-6606XL	ZH-6606XL	439	1239
ETW-1490-ES	WATER CLOSET	611	9603	MBFW	Z-6611XL	ZH-6603XL	540	1240
ETW-1490-FM-BS	WATER CLOSET	611	9603	MBFW	Z-6611XL	ZH-6603XL	540	1240
ETW-1490-FM-BS-FA	FRONT ACCESS WATER CLOSET	611	9603	MBFW	Z-6611XL	ZH-6603XL	540	1240
ETW-1490-FM-BS-HC	HANDICAP WATER CLOSET	611	9603	MBFW	Z-6611XL	ZH-6603XL	540	1240
ETW-1490-FM-BS-HC-FA	HANDICAP FRONT ACCESS WATER CLOSET	611	9603	MBFW	Z-6611XL	ZH-6603XL	540	1240
ETW-1490-FM-TS	WATER CLOSET	110	910	MBFW	Z-6606XL	ZH-6606XL	439	1239
ETW-1490-FM-TS-FA	FRONT ACCESS WATER CLOSET	110	910	MBFW	Z-6606XL	ZH-6606XL	439	1239
ETW-1490-FM-TS-HC	HANDICAP WATER CLOSET	110	910	MBFW	Z-6606XL	ZH-6606XL	439	1239
ETW-1490-FM-TS-HC-FA	HANDICAP FRONT ACCESS WATER CLOSET	110	910	MBFW	Z-6606XL	ZH-6606XL	439	1239
ETW-1490-OF-BS	WATER CLOSET	611	910	MBFW	Z-6611XL	ZH-6603XL	540	1240
ETW-1490-OF-TS	WATER CLOSET	110	910	MBFW	Z-6606XL	ZH-6606XL	439	1239
ETWS-1490-CM-BS	WATER CLOSET	611	9603	MBFW	Z-6611XL	ZH-6603XL	540	1240
ETWS-1490-CM-TS	WATER CLOSET	110	910	MBFW	Z-6606XL	ZH-6606XL	439	1239
ETWS-1490-FM-BS	WATER CLOSET	611	9603	MBFW	Z-6611XL	ZH-6603XL	540	1240
ETWS-1490-FM-BS-FA	FRONT ACCESS WATER CLOSET	611	9603	MBFW	Z-6611XL	ZH-6603XL	540	1240
ETWS-1490-FM-BS-FA-HC	HANDICAP FRONT ACCESS WATER CLOSET	611	9603	MBFW	Z-6611XL	ZH-6603XL	540	1240
ETWS-1490-FM-BS-HC	HANDICAP WATER CLOSET	110	910	MBFW	Z-6606XL	ZH-6606XL	439	1239
ETWS-1490-FM-TS	WATER CLOSET	110	910	MBFW	Z-6606XL	ZH-6606XL	439	1239
ETWS-1490-FM-TS-FA	FRONT ACCESS WATER CLOSET	110	910	MBFW	Z-6606XL	ZH-6606XL	439	1239
ETWS-1490-FM-TS-FA-HC	HANDICAP FRONT ACCESS WATER CLOSET	110	910	MBFW	Z-6606XL	ZH-6606XL	439	1239
ETWS-1490-FM-TS-HC	HANDICAP WATER CLOSET	110	910	MBFW	Z-6606XL	ZH-6606XL	439	1239
ETWS-1490-1490-OF-BS	WATER CLOSET	611	9603	MBFW	Z-6611XL	ZH-6603XL	540	1240

When specifying low flow toilets, the accompanying flush valve must be a low flow flush valve:

Delany low flow: add "1" suffix.

Sloan low flow: add "1.6" suffix (Exception: for model #110-1.6, use model #111)

Zurn low flow: add "WS-1" suffix

visit our website at www.willoughby-ind.com

5105 West 78th Street • Indianapolis, IN. 46268

(317) 875-0830 • Fax: (317) 875-0837 • (800) 428-4065



MADE IN THE U.S.A.

Flush Valve Selection Chart (cont.)

FLUSH VALVE	COMPATIBILITY CHART		MECH'L SLOAN		HYDRAULIC ACTUATOR		MECH'L ZURN		HYDRAULIC ZURN		MECH'L DELANY		HYDRAULIC DELANY	
	WATER CLOSET	URINAL	110	910	MBFW	Z-6606XL	Z-6606XL	ZH-6606XL	439	1239				
ETWS-1490-OF-TS	WATER CLOSET		110	910	MBFW	Z-6606XL	Z-6606XL	ZH-6606XL	439	1239				
FD-1400-LF	DETOX UNIT LESS FLANGES		110	910	MBPH	Z-6150XL	Z-6150XL	ZH-6150XL	538	1238				
FD-1400-WF	DETOX UNIT WITH FLANGES		110	910	MBPH	Z-6150XL	Z-6150XL	ZH-6150XL	538	1238				
UW-1412-BJ-BS	URINAL		609	9609	MBFW	Z-6609XL	Z-6609XL	ZH-6609XL	547	1247				
UW-1412-BJ-BS-FA	FRONT ACCESS URINAL		609	9609	MBFW	Z-6609XL	Z-6609XL	ZH-6609XL	547	1247				
UW-1412-BJ-TS	URINAL		180-T	980-T	MBFW	Z-6610XL	Z-6610XL	ZH-6610XL	439	1239				
UW-1412-BJ-TS-FA	FRONT ACCESS URINAL		180-T	980-T	MBFW	Z-6610XL	Z-6610XL	ZH-6610XL	439	1239				
UW-1412-WO-BS	URINAL		613	9613	MBFW	Z-6613XL	Z-6613XL	ZH-6613XL	576	1276				
UW-1412-WO-BS-FA	FRONT ACCESS URINAL		613	9613	MBFW	Z-6613XL	Z-6613XL	ZH-6613XL	576	1276				
UW-1412-WO-TS	URINAL		186	986	MBFW	Z-6614XL	Z-6614XL	ZH-6614XL	575	1275				
UW-1412-WO-TS-FA	FRONT ACCESS URINAL		186	986	MBFW	Z-6614XL	Z-6614XL	ZH-6614XL	575	1275				
UW-1438-BS	URINAL		613	9613	MBFW	Z-6613XL	Z-6613XL	ZH-6613XL	576	1276				
UW-1438-TS	URINAL		186	986	MBFW	Z-6614XL	Z-6614XL	ZH-6614XL	575	1275				
UW-1814-BJ-BS	URINAL		609	9609	MBFW	Z-6609XL	Z-6609XL	ZH-6609XL	547	1247				
UW-1814-BJ-BS-FA	FRONT ACCESS URINAL		609	9609	MBFW	Z-6609XL	Z-6609XL	ZH-6609XL	547	1247				
UW-1814-BJ-TS	URINAL		180-T	980-T	MBFW	Z-6610XL	Z-6610XL	ZH-6610XL	439	1239				
UW-1814-BJ-TS-FA	FRONT ACCESS URINAL		180-T	980-T	MBFW	Z-6610XL	Z-6610XL	ZH-6610XL	439	1239				
UW-1814-WO-BS	URINAL		613	9613	MBFW	Z-6613XL	Z-6613XL	ZH-6613XL	576	1276				
UW-1814-WO-BS-FA	FRONT ACCESS URINAL		613	9613	MBFW	Z-6613XL	Z-6613XL	ZH-6613XL	576	1276				
UW-1814-WO-TS	URINAL		186	986	MBFW	Z-6614XL	Z-6614XL	ZH-6614XL	575	1275				
UW-1814-WO-TS-FA	FRONT ACCESS URINAL		186	986	MBFW	Z-6614XL	Z-6614XL	ZH-6614XL	575	1275				
UW-1836-BS	URINAL		613	9613	MBFW	Z-6613XL	Z-6613XL	ZH-6613XL	576	1276				
UW-1836-MPT	URINAL		186	986	MBFW	Z-6614XL	Z-6614XL	ZH-6614XL	575	1275				
UW-1836-TS	URINAL		186	986	MBFW	Z-6614XL	Z-6614XL	ZH-6614XL	575	1275				
UW-1848-BS	URINAL		613	9613	MBFW	Z-6613XL	Z-6613XL	ZH-6613XL	576	1276				
UW-1848-MPT	URINAL		186	986	MBFW	Z-6614XL	Z-6614XL	ZH-6614XL	575	1275				
UW-1848-TS	URINAL		186	986	MBFW	Z-6614XL	Z-6614XL	ZH-6614XL	575	1275				
UW-1860-BS	URINAL		613	9613	MBFW	Z-6613XL	Z-6613XL	ZH-6613XL	576	1276				
UW-1860-MPT	URINAL		186	986	MBFW	Z-6614XL	Z-6614XL	ZH-6614XL	575	1275				
UW-1860-TS	URINAL		186	986	MBFW	Z-6614XL	Z-6614XL	ZH-6614XL	575	1275				
UW-1872-BS	URINAL		609	9609	MBFW	Z-6609XL	Z-6609XL	ZH-6609XL	547	1247				
UW-1872-MPT	URINAL		180-T	980-T	MBFW	Z-6610XL	Z-6610XL	ZH-6610XL	448	1248				
UW-1872-TS	URINAL		180-T	980-T	MBFW	Z-6610XL	Z-6610XL	ZH-6610XL	448	1248				
UW-1896-BS	URINAL		609	9609	MBFW	Z-6609XL	Z-6609XL	ZH-6609XL	547	1247				
UW-1896-MPT	URINAL		180-T	980-T	MBFW	Z-6610XL	Z-6610XL	ZH-6610XL	448	1248				
UW-1896-TS	URINAL		180-T	980-T	MBFW	Z-6610XL	Z-6610XL	ZH-6610XL	448	1248				

When specifying low flow toilets, the accompanying flush valve must be a low flow flush valve:

Delany low flow: add "1" suffix.

Sloan low flow: add "1.6" suffix (Exception: for model #110-1.6, use model #111)

Zurn low flow: add "WS-1" suffix

visit our website at www.willoughby-ind.com

5105 West 78th Street • Indianapolis, IN, 46268

(317) 875-0830 • Fax: (317) 875-0837 • (800) 428-4065



MADE IN THE U.S.A.



(Page Intentionally Left Blank)

