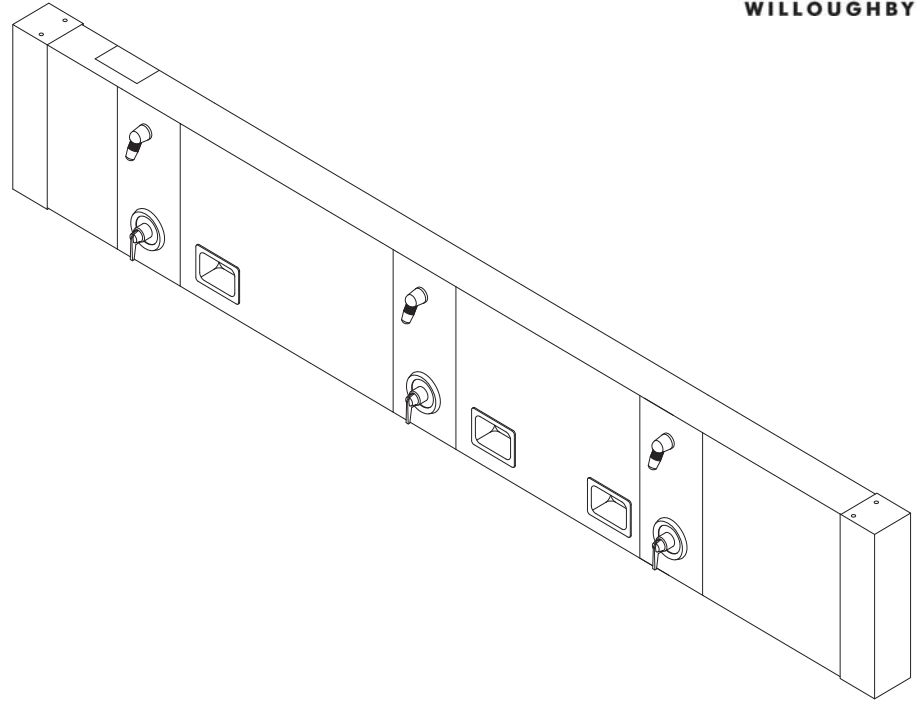




CWCWS Series Continuous Wall Shower



(Unit may be shown with optional features)

To specify fixture and accessories, use the Model Number and Options page.

Example: To specify a Continuous Wall Shower system with (3) stations, temp./pressure-balancing mixing valves, standard 2.5 GPM flow rate, standard APS adjustable vandal-resistant shower heads, and recessed soap dishes

Use the following Willoughby Model Number:
CWCWS-3-TPV-2.5-APS-RD

Recommended Specifications

Continuous Wall Shower system shall be:
Willoughby Model No. **CWCWS**
(Select from model number and options list on next page)

Shower housing shall be fabricated from 16 gauge, Type 304 stainless steel with exposed stainless surfaces polished to a #4 satin finish.

Standard equipment shall include:

- Shower valves (from Valve Selection options list)
- Shower heads (from Shower Head Selection options list)
- Individual shower station panels fastened with vandal resistant security screws

Standard spacing between shower heads shall be 36"

Shower unit shall be factory pre-piped, tested for proper operation and ready for installation by contractor. Anchoring shall be by mounting bracket with Uni-Strut for supplies, with anchoring hardware by others. Unit requires no chase area for installation and maintenance.

Optional WaterSense Labeled ligature-resistant shower head available (LRSH).

Note: Continuous wall shower systems are designed for each specific application. **Contractor shall furnish to manufacturer exact field dimensions prior to fabrication.**

NUMBER OF SHOWER HEADS	INLET DIAMETER*
1 TO 4	3/4"
5 TO 8	1"
9 TO 11	1 1/4"
12+	1 1/2"

*BASED ON 45 PSI INLET PRESSURE



WARNING: Cancer and Reproductive Harm

- www.P65Warnings.ca.gov

visit our website at www.willoughby-ind.com
5105 West 78th Street • Indianapolis, IN. 46268
(317) 875-0830 • Fax: (317) 875-0837 • (800) 428-4065



MADE IN THE U.S.A.

MODEL NUMBER AND OPTIONS:

1.) Base Model Number:

CWCWS Continuous Wall Shower

2.) Shower Stations:

Number of Shower Stations (must specify): _____

3.) Valve Selection:

- NV No Valve
- PML1 Single Temp. Pneumatic Metering
- PML2 Dual Temp. Pneumatic Metering
- E1L1 Single Temp. Electronic (Pick Control)*
- E1L2 Dual Temp. Electronic (Pick Control)*
- PBV Pressure-Balancing Mixing Valve
- TPV Temperature/Pressure-Balancing Mixing Valve
- TPLR Ligature-resistant Temp/Pressure-balancing Mixing Valve**
- SVC Single Temp. Compression Valve
- DVC Dual Temp. Compression Valves
- MA2 **Valve Manifold Option** (Pneumatic or Electronic Valves Only):
(See the Manifold Option Page at the end of Catalog Section C14 for further information)

4.) Push Button Selection:

Pneumatic or Electronic Valves Only:

- PBH Ligature-resistant Pneumatic Push Buttons**
- PZPB Ligature-resistant Piezo Electronic Push Buttons**

5.) Flow Rates:

- 2.5 GPM (Standard)
- 2.0 GPM
- 1.5 GPM

6.) Electronic Control* (Must Use Electronic Push Button):

- WUSC-2200
- WUSC-2400
- Pneutronic

7.) Shower Head Selection:

- APS Adjustable Vandal-resistant Shower Head
- NPS Non-Adjustable Vandal-resistant Shower Head
- UBJ Universal Ball Joint Shower Head
- LBJ Lockable Ball Joint Shower Head
- CSH Ligature-resistant Shower Head**
- FX Hand-held Flexshower Head (w/ quick disconnect, vacuum breaker, and (1) hook)
- LRSH Ligature-resistant Shower Head, WaterSense Labeled Insert (1.5 GPM & 2.0 GPM Flow Rate only) **

8.) Other Options:

- TF24H Hard-wired Transformer, 110VAC to 24VAC* (Standard)
- TF24P Plug-in Transformer, 110VAC to 24VAC*
- TMV Inline Thermostatic Mixing Valve
- SD Surface Mounted Soap Dish
- RD Recessed Mounted Soap Dish
- PS Pipe Shroud (Specify Length): _____
- HCA Handicap Accessible Shower Station (1 station will include: Diverter Valve, Hand-held Flexshower Head, and 1 Flexshower Hook)
- Other _____
- Other _____

* (Req. 110V power through ground fault interrupter (GFCI) receptacle / breaker)

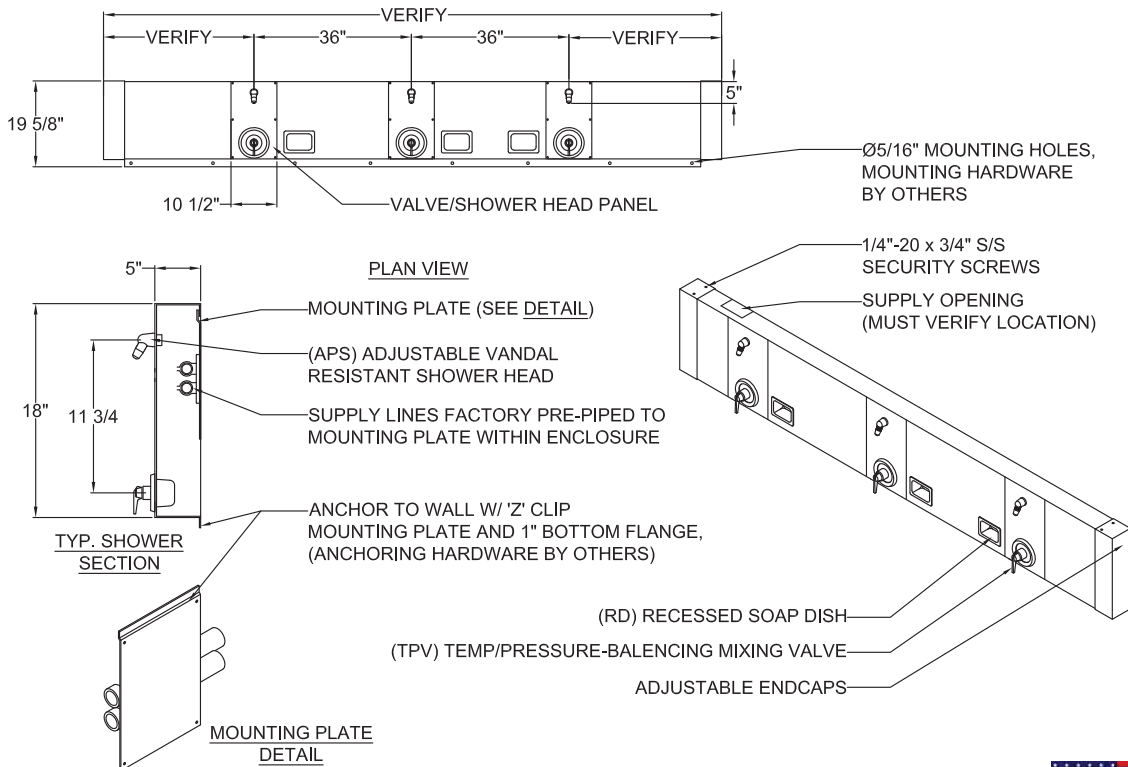
****LIGATURE-RESISTANT DISCLAIMER**

This product is designed to minimize ligature points. While every effort has been made to reduce the possibility of ligature points, this product does not eliminate all risks. Ligature-Resistant products by Willoughby Industries are to be used in conjunction with, not as a replacement for, trained professionals.

Approved For Manufacturing By: _____ Date: _____ Company: _____
Wall Thickness: _____ Wall Type: _____

CONTRACTOR SHALL FURNISH TO MANUFACTURER EXACT FIELD DIMENSIONS PRIOR TO FABRICATION

VERIFY ALL DIMENSIONS WITH FACTORY PRIOR TO ROUGH-IN
WILLOUGHBY RESERVES THE RIGHT TO MAKE CHANGES IN DESIGN AND DIMENSIONS WITHOUT FORMAL NOTICE AND WITHOUT INCURRING OBLIGATION.



visit our website at www.willoughby-ind.com
5105 West 78th Street • Indianapolis, IN. 46268
(317) 875-0830 • Fax: (317) 875-0837 • (800) 428-4065



MADE IN THE U.S.A.