



WILLOUGHBY INDUSTRIES, INC.
INDIANAPOLIS, INDIANA

DIMENSIONS ARE +/- 1/4"
EXCEPT AS NOTED

TITLE:

WSH-5-D SHOWERHEAD ASSEMBLY

MATERIAL:

N/A

DRAWN BY: R.T.S.

DATE: 10/6/98

SCALE: NONE

DRAWING #:

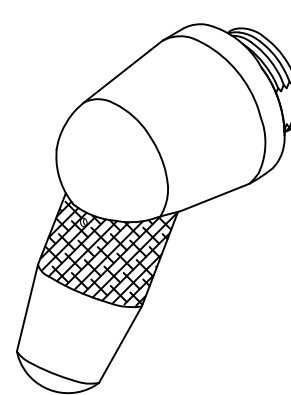
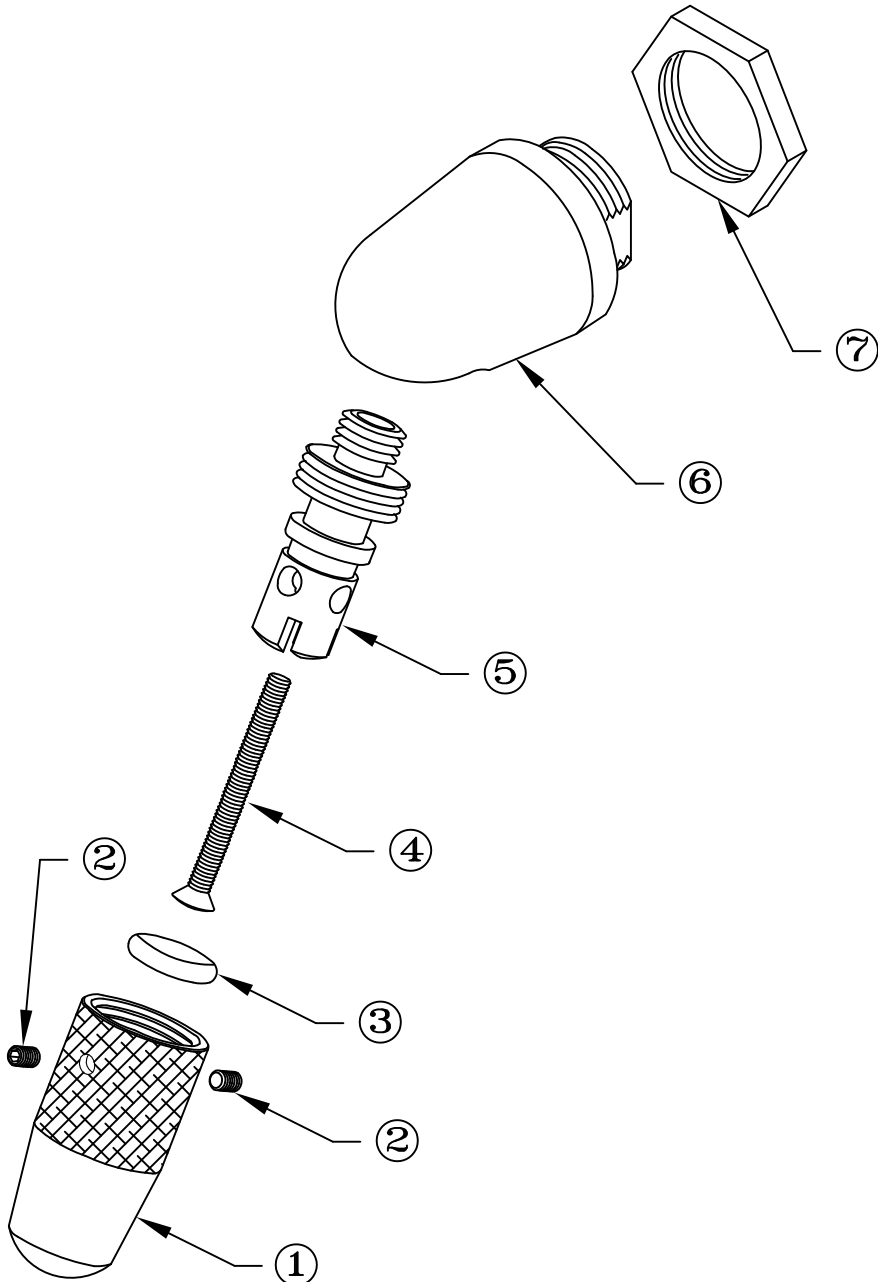
P984065A

REV. #:

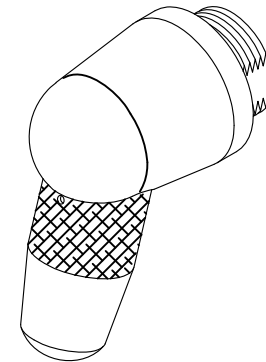
D
11/19/12

STANDARD DWG.

ITEM	DESCRIPTION	PART #
1	SHOWERHEAD CAP, S/S	380013
2	8-32x1/4" S/S SET SCREWS (2)	540010
3	'O' RING	600120
4	10-32x2 1/2" S/S SCREW	540012
5	SHOWERHEAD ORIFICE, S/S	380018
6	30° SHOWERHEAD BASE	380007
6	17° SHOWERHEAD BASE (OPTIONAL)	380008
7	3/4" NPT BRASS HEX NUT	600612N



30° ASSEMBLED
INV. #380025



17° ASSEMBLED
INV. #380026