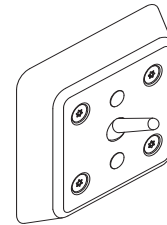
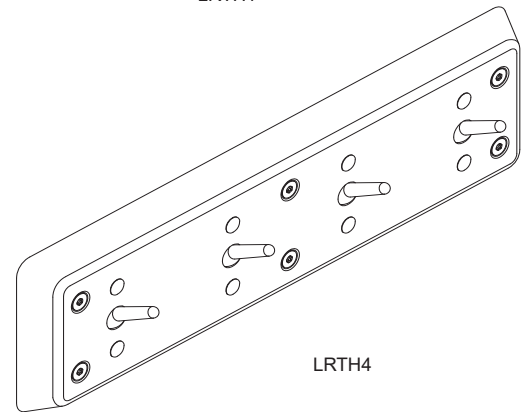


## LRTH Series Ligature-resistant Release Towel Hook

✓	MODEL NUMBER	NUMBER OF HOOKS
	LRTH1	1
	LRTH4	4



LRTH1



LRTH4

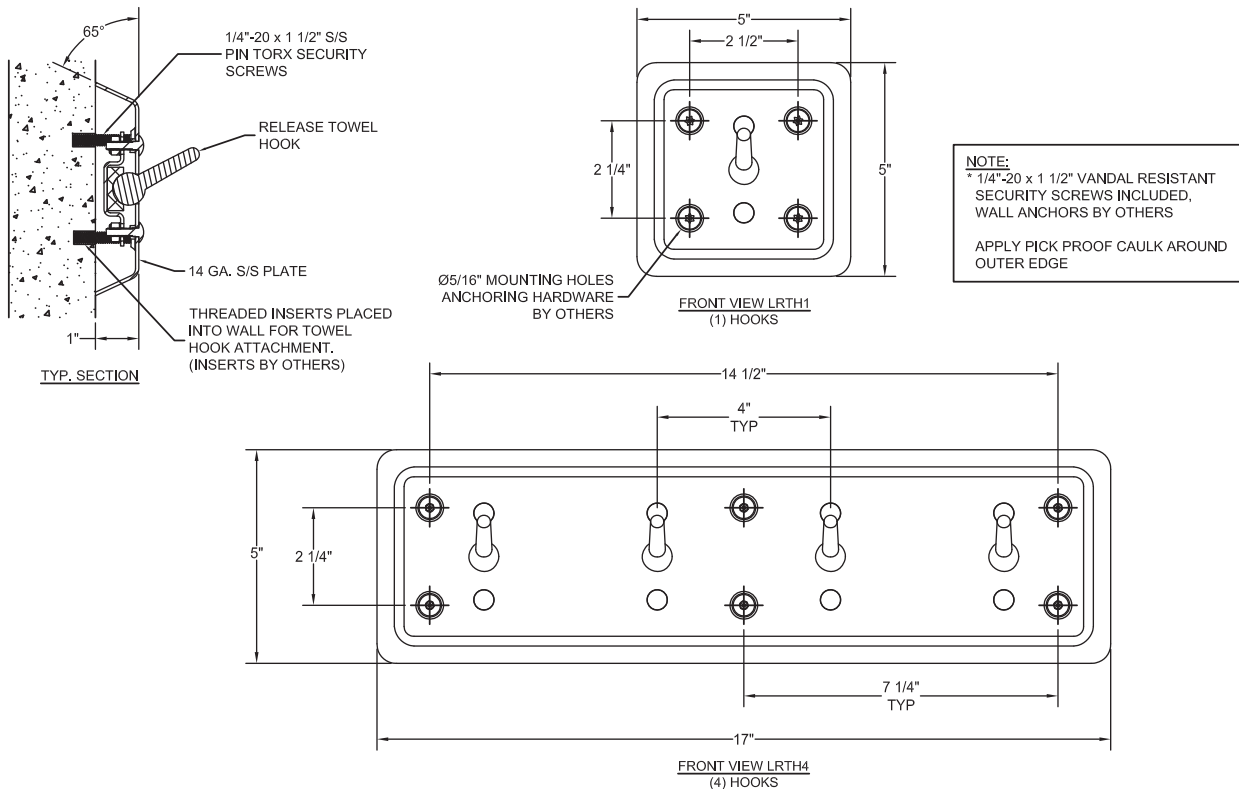
LRTH \_\_\_\_\_ ligature-resistant release towel hook assembly shall be fabricated from Type 304 stainless steel. Exposed stainless steel surfaces shall be polished to a #4 satin finish. Pressure activated release towel hook(s) will support light clothing and towel loads. However, excessive hook loads will cause downward hook release.

Towel hook assembly shall have ligature-resistant sloped sides in addition to the pressure activated release towel hook(s).

Wall anchors by others.

### LIGATURE-RESISTANT DISCLAIMER

This product is designed to minimize ligature points. While every effort has been made to reduce the possibility of ligature points, this product does not eliminate all risks. Ligature-Resistant products by Willoughby Industries are to be used in conjunction with, not as a replacement for, trained professionals.



**WARNING: Cancer and Reproductive Harm**

- [www.P65Warnings.ca.gov](http://www.P65Warnings.ca.gov)



visit our website at [www.willoughby-ind.com](http://www.willoughby-ind.com)  
5105 West 78th Street • Indianapolis, IN. 46268  
(317) 875-0830 • Fax: (317) 875-0837 • (800) 428-4065

MADE IN THE U.S.A.