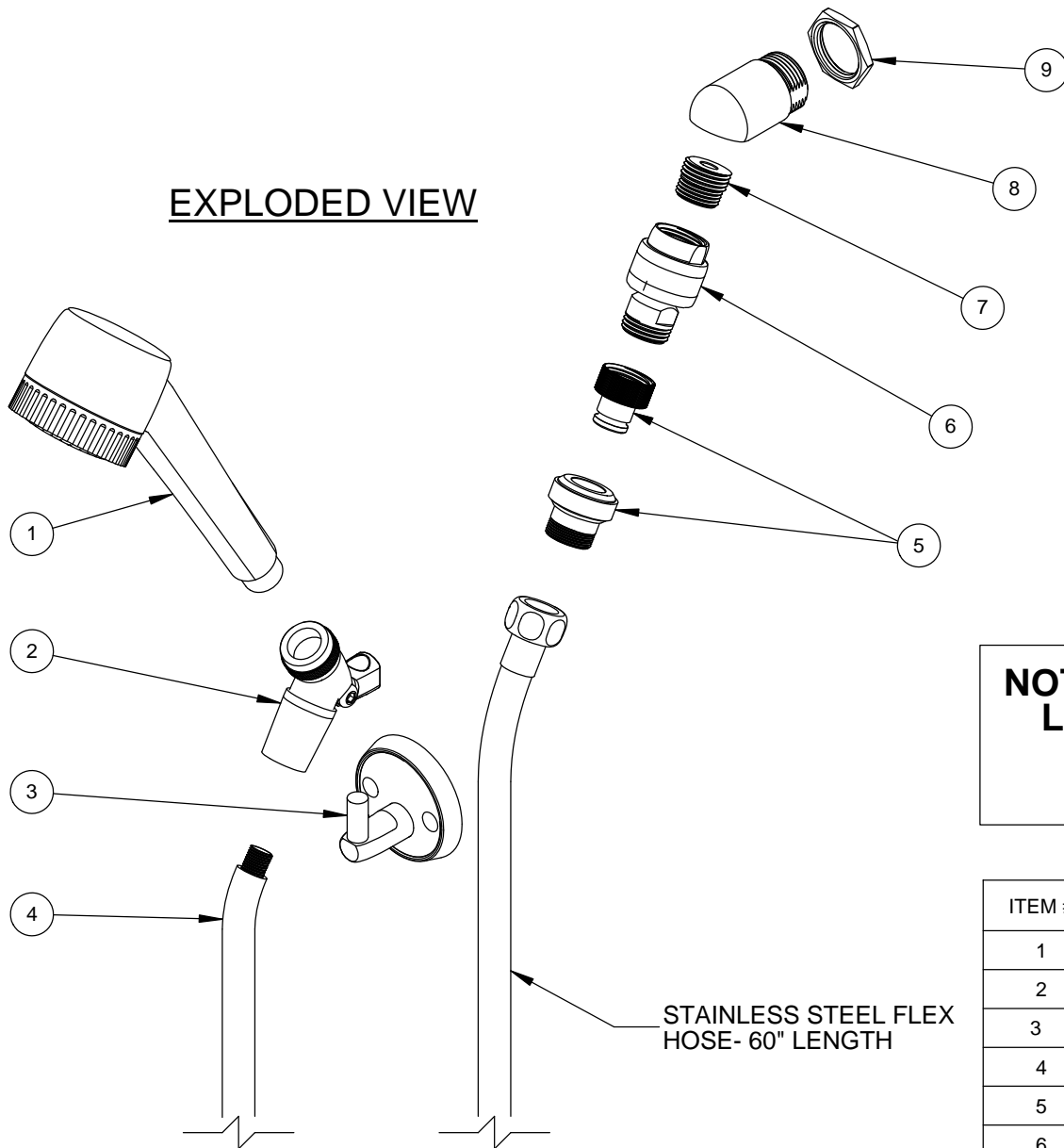
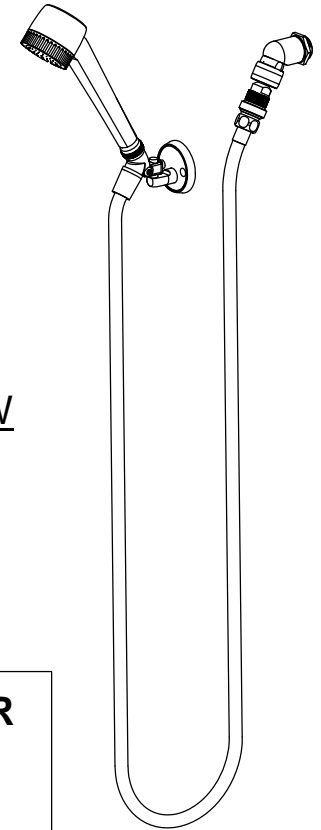


EXPLODED VIEW



**ASSEMBLED VIEW
(NOT TO SCALE)**



**NOT RECOMMENDED FOR
LIGATURE-RESISTANT
OR CORRECTIONAL
APPLICATIONS**

ITEM #	PART #	DESCRIPTION	QTY.
1	600677	FIXED SPRAY HAND HELD SHOWER HEAD	1
2	600676	SWIVEL CONNECTOR HOOK	1
3	600681	WALL MOUNT FX HOOK	1
4	600680	STAINLESS STEEL FLEX HOSE FOR FLEXSHOWER	1
5	600679	QUICK CONNECT ADAPTER	1
6	600675	VACUUM BREAKER- FLEXSHOWER	1
7	380004	THREADED SWIVEL ADAPTER	1
8	380029	SHOWER HEAD BASE - 30 DEG.	1
9	600612N	HEXNUT, 3/4"-14 NPSM	1

**ITEM #'S 1, 2, 4, & 5 AVAILABLE AS P/N: 600684N
HAND HELD FLEXSHOWER ASSEMBLY**

	Willoughby Industries, Inc. Indianapolis, Indiana		TITLE / DESC.: (FX) FLEXSHOWER HANDICAP SHOWER OPTION				PART #: P981059D	
	TOLERANCES EXCEPT AS NOTED	2 PLCS: +0.03 3 PLCS: +0.015 FRACTIONS: ±1/32" ANGLE: ±1°	SIZE: A SCALE: 1:12	MATL: SEE BOM	REF.: P981059D	REVISION: J	ORIG.: RTS 10/1/98 REV.: MW 3/25/16	STANDARD SHEET: 1 OF 1