

WRS-FA-ADA Series ADA-Compliant Front Mounted Recessed Shower Panel



Recommended Specifications

ADA-Compliant, Front Mounted, Recessed Shower Panel shall be: Willoughby Model No. **WRS-FA-ADA**
(Select from model number and options list on next page)

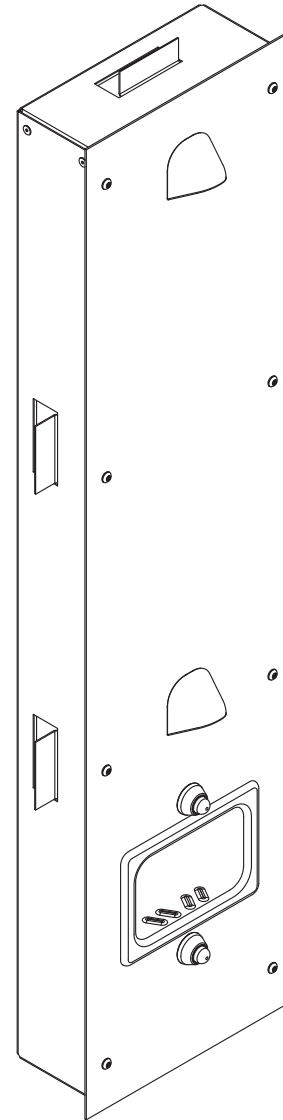
Shower panel shall be fabricated from 14 gauge, Type 304 stainless steel with exposed stainless surfaces polished to a #4 satin finish. Mounting frame shall be fabricated from 18 gauge galvanized steel.

Standard equipment shall include:

- Shower valves (from Valve Selection options list)
- Shower heads (from Shower Head Selection options list)
- In-wall mounting frame

Shower panel shall attach to mounting frame with vandal resistant stainless steel screws. Unit requires no chase area for installation and maintenance.

Optional WaterSense Labeled ligature-resistant shower head available (LRSH).



(Unit may be shown with optional features)

To specify fixture and accessories, use the Model Number and Options page.

Example: To specify a Front Mounted, Recessed Handicap Shower Panel w/ Hand Held Flexshower Head with left hand controls, single temp. pneumatic metering valves(manifolded), standard ligature-resistant pneumatic push buttons, standard 2.0 GPM flow rate, standard 2 (LRSH) shower heads, in-line thermostatic mixing valve, and recessed mounted soap dish

Use the following Willoughby Model Number:

WRS-FA-ADA-PML1-MA2-PBH-2.0GPM-LRSH-2HD-TMV-RD



WARNING: Cancer and Reproductive Harm

- www.P65Warnings.ca.gov

visit our website at www.willoughby-ind.com
5105 West 78th Street • Indianapolis, IN. 46268
(317) 875-0830 • Fax: (317) 875-0837 • (800) 428-4065



MADE IN THE U.S.A.

MODEL NUMBER AND OPTIONS:

1.) Base Model Number:

WRS-FA-ADA ADA-Compliant, Front Mounted, Recessed Shower Panel

2.) Panel Orientation (Must Specify if Dual Temp. is Selected):

L Left Hand Controls
 R Right Hand Controls

3.) Valve Selection:

NV No Valve
 PML1 Single Temp. Pneumatic Metering Ⓢ Ⓜ
 PML2 Dual Temp. Pneumatic Metering Ⓢ Ⓜ
 E1L1 Single Temp. Electronic (Pick Control)* Ⓢ Ⓜ
 E1L2 Dual Temp. Electronic (Pick Control)* Ⓢ Ⓜ

Valve Manifold Option:

Pneumatic or Electronic Valves Only:

(See the Manifold Option Page at the end of Catalog Section S5 for further information)

MA2

4.) Push Button Selection:

Pneumatic or Electronic Valves Only:

PBH Ligature-resistant Pneumatic Push Buttons Ⓢ Ⓜ
 PZPB Ligature-resistant Piezo Electronic Push Buttons* Ⓢ Ⓜ

5.) Flow Rates:

2.5 GPM (Standard)
 2.0 GPM
 1.5 GPM

6.) Electronic Controls* (Must Use Electronic Push Button):

WUSC-2200 WUSC-2400 Pneumatic WMS II

7.) Shower Head Selection:

APS Adjustable Vandal-resistant Shower Head
 NPS Non-Adjustable Vandal-resistant Shower Head Ⓢ
 UBJ Universal Ball Joint Shower Head
 LBJ Lockable Ball Joint Shower Head
 CSH Ligature-resistant Shower Head Ⓢ Ⓜ
 LRSH Ligature-resistant Shower Head, WaterSense Labeled Insert (1.5 GPM & 2.0 GPM Flow Rate only) Ⓜ
 FX Hand-held Flexshower Head (w/ quick disconnect, vacuum breaker, and (1) hook)
 LRFX Ligature-resistant Quick Disconnect Hand Held Shower Ⓜ
 2HD Dual Fixed Shower Heads Ⓢ

8.) Options:

FSS Fold-up Stainless Steel Shower Seat Ⓢ
 HL Hi-Lo (2 Hooks For Flexshower, Wall Mounted)
 MT Wall Template
 TMV In-line Thermostatic Mixing Valve
 TF24H Hard-wired Transformer, 110VAC to 24VAC*
 TF24P Plug-in Transformer, 110VAC to 24VAC*
 RD Recessed Mounted Soap Dish Ⓢ Ⓜ
 SD Surface Mounted Soap Dish
 SLB24 24" Adjustable Slide Bar (for Flexshower, Wall Mounted)
 Other _____

*(Req. 110V power through ground fault interrupter (GFCI) receptacle / breaker)

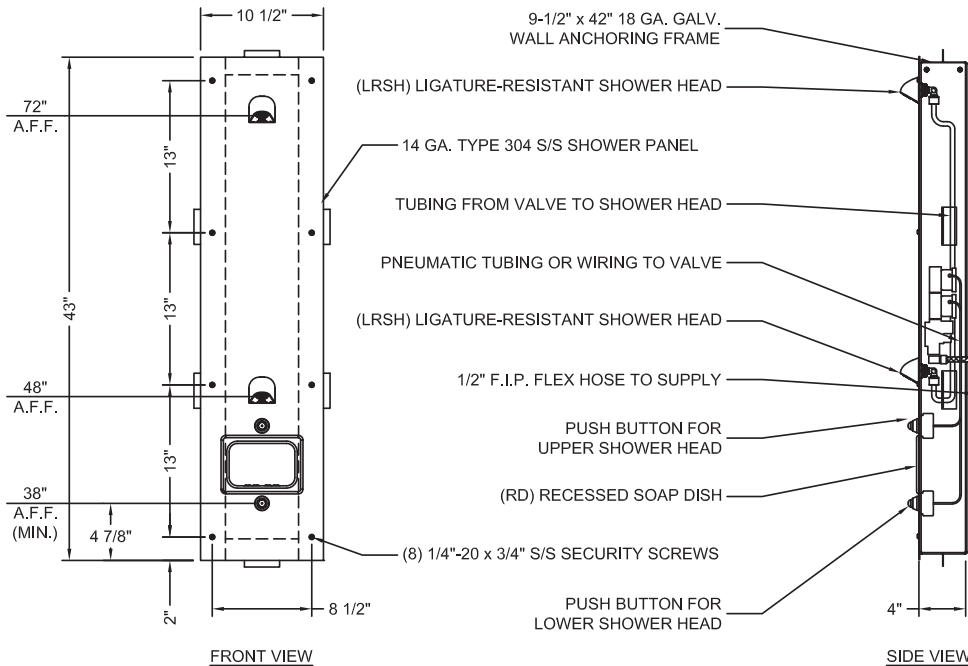
Ⓢ For security applications
 Ⓜ Ligature-resistant option**

****LIGATURE-RESISTANT DISCLAIMER**

This product is designed to minimize ligature points. While every effort has been made to reduce the possibility of ligature points, this product does not eliminate all risks. Ligature-Resistant products by Willoughby Industries are to be used in conjunction with, not as a replacement for, trained professionals.

Approved For Manufacturing By: _____ Date: _____ Company: _____
 Wall Thickness: _____ Wall Type: _____

VERIFY ALL DIMENSIONS WITH FACTORY PRIOR TO ROUGH-IN
 WILLOUGHBY RESERVES THE RIGHT TO MAKE CHANGES IN DESIGN AND DIMENSIONS WITHOUT FORMAL NOTICE AND WITHOUT INCURRING OBLIGATION.



visit our website at www.willoughby-ind.com
 5105 West 78th Street • Indianapolis, IN. 46268
 (317) 875-0830 • Fax: (317) 875-0837 • (800) 428-4065



MADE IN THE U.S.A.