



WILLOUGHBY LRFD SERIES

# LIGATURE-RESISTANT FLOOR DRAIN



The Ligature-Resistant Floor Drain (LRFD) Series is recommended for high-use areas where risk accommodations are a concern, such as behavioral healthcare and mental health facilities.

Various connection types

Fit multiple pipe sizes

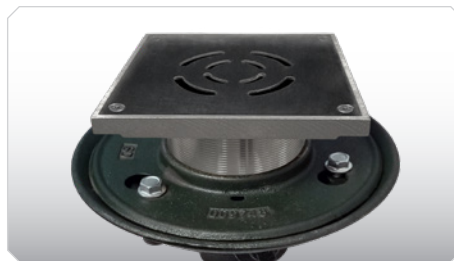
Buy America Act compliant<sup>1</sup>

## GREAT FOR BEHAVIORAL ENVIRONMENTS



### PURPOSEFULLY DESIGNED

We didn't simply retrofit an existing model; we consulted with behavioral healthcare professionals to create these drains.



### MANUFACTURED TO LAST

Our drains are fabricated from 7-gauge, type 304 stainless steel and utilize an industry-standard cast iron drain body.



### ADDED PEACE OF MIND

Each drain cover has been designed on the underside to minimize tie-off points for a person in a behavioral-type facility.



## TECHNICAL SPECIFICATIONS

<b>Material(s)</b>	Cast Iron Type 304 Stainless Steel	<b>Retrofit Capable</b>	No
<b>Drain Shape(s)</b>	Round or Square	<b>Ligature-Resistant</b>	Yes
<b>Drain Insert Option(s)</b>	5" or 6"	<b>Vandal-Resistant</b>	Yes
<b>Pipe Size(s)</b>	2", 3", or 4"	<b>ADA Compliant</b>	N/A
<b>Connection Type(s)</b>	No-hub drain Inside Caulk drain Push-on Hub with Gasket		

<sup>1</sup>Available at an additional cost



REVIT  
FILES ARE  
AVAILABLE  
ON OUR  
WEBSITE

5105 West 78th Street, Indianapolis, IN 46268  
 toll free 800.428.4065 • fax 317.875.0837  
[www.willoughby-ind.com](http://www.willoughby-ind.com)



**WILLOUGHBY**  
 COUNT ON US.