

WILLOUGHBY INDUSTRIES
ACCESSORY
LIGATURE-RESISTANT
PUSH BUTTON FAUCET ASSEMBLY

INSTALLATION AND
 OPERATION MANUAL

LRFC-PBH / LRFC-PZPB

PART#: LRFC-PBK / LRFC-PZK

LIGATURE-RESISTANT PUSH BUTTON FAUCET

STANDARD FEATURES

- Willoughby (LRFC-PBH) Ligature-resistant Pneumatic Push button faucet is designed to allow users to wash with the use of pushbuttons.
- Specifically for mental & behavioral healthcare facility use.
- Recommended operational pressure, 35-70 PSI.
- Metering valve timing can be adjusted from 5-90 seconds of run time.

DISASSEMBLY

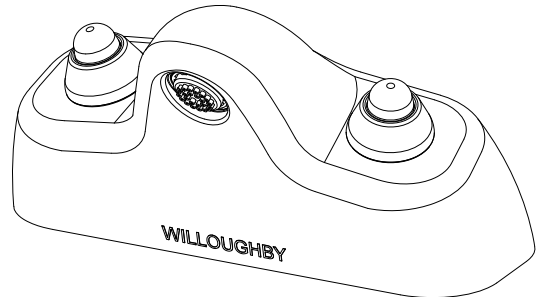
1. Unscrew the (2) 1/4-20 nuts on the all thread rod and take off the lock washers and centering washers.
2. Unscrew the (4) 8-32 screws from the mounting plate and remove the plate from the bottom of the faucet.

PNEUMATIC FAUCET INSTALLATION

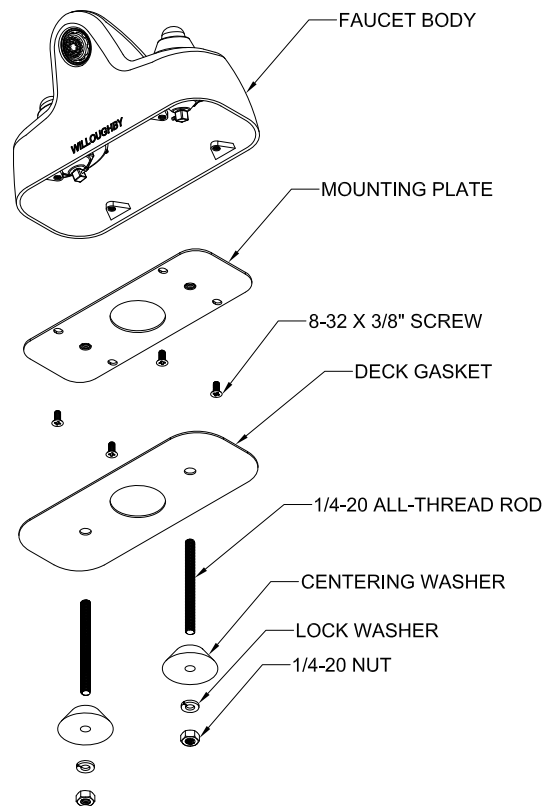
1. Connect the included 1/8" Red and Blue tubing to the barbs of the push buttons.
2. Replace the mounting plate onto the bottom of the faucet, feeding the (2) tubes from the push button through the center hole. Use the (4) 8-32 screws to secure the plate to the mounting tabs of the faucet.
3. Make sure the deck gasket for the faucet is on the faucet and both all-thread rods, and pneumatic tubing for the push buttons are through the gasket.

Note: Faucet can be mounted without the gasket, but the bottom edge will need to be sealed with caulking (non-pick is recommended).

4. From the underside of the fixture, align the (2) 1/4-20 all-thread rods with the mounting holes, making sure the pneumatic tubing for both push buttons are through the center hole of the fixture.
5. Install the centering washers, lock washers and nuts onto the all-thread rods (all included). Tighten the nuts until the faucet is secure.
6. After thorough flushing, connect the valve to the supplies and the faucet to the water line from the valve using the 3/8" PTC Fitting (included).



SEE FOLLOWING PAGES FOR FAUCET
 DIMENSIONS AND PART NUMBERS



WILLOUGHBY

COUNT ON US.

1.800.428.4065 TOLL FREE | www.willoughby-ind.com

STANDARD FEATURES

- Willoughby (LRFC-PZPB) Ligature-resistant Electronic Piezo Push button faucet is designed to allow users to wash with the use of pushbuttons.
- Specifically for mental & behavioral healthcare facility use.
- Recommended operational pressure, 35-70 PSI.
- Pneutronic all-purpose valve controller can be adjusted from 1-255 seconds of run time.

DISASSEMBLY

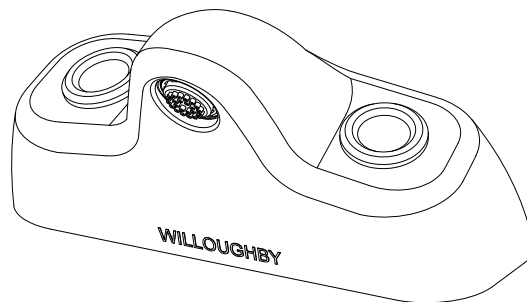
1. Unscrew the (2) 1/4-20 nuts on the all thread rod and take off the lock washers and centering washers.
2. Unscrew the (4) 8-32 screws from the mounting plate and remove the plate from the bottom of the faucet.

ELECTRONIC FAUCET INSTALLATION

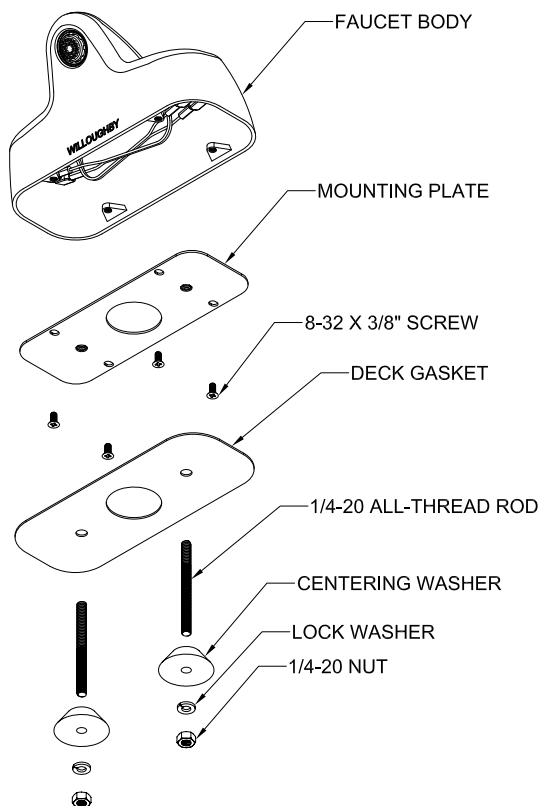
1. Replace the mounting plate onto the bottom of the faucet, feeding the (2) wires from the push buttons through the center hole. Use the (4) 8-32 screws to secure the plate to the mounting tabs of the faucet.
2. Make sure the deck gasket for the faucet is on the faucet and both all-thread rods, and wires for the push buttons are through the gasket.

Note: Faucet can be mounted without the gasket, but the bottom edge will need to be sealed with caulking (non-pick is recommended).

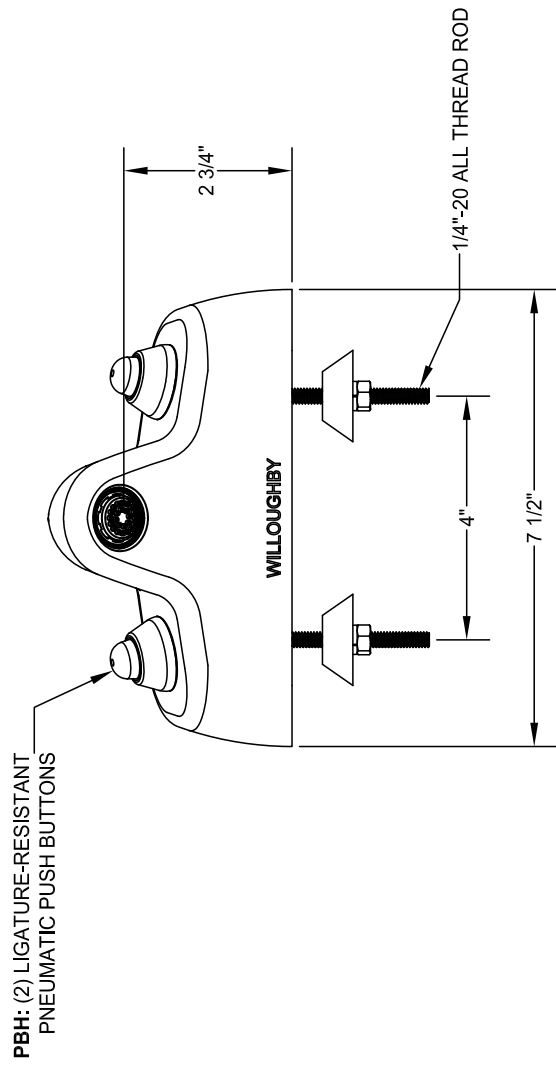
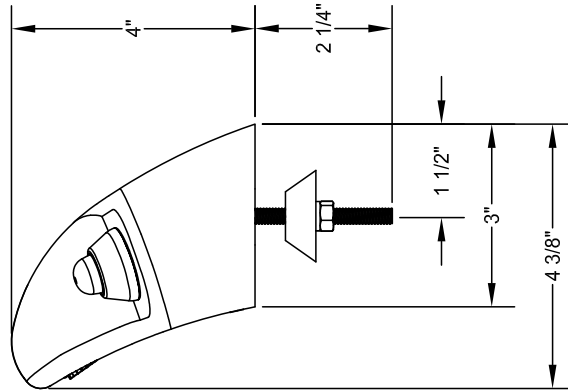
3. From the underside of the fixture, align the (2) 1/4-20 all-thread rods with the mounting holes, making sure the wiring for both push buttons are through the center hole of the fixture.
4. Install the centering washers, lock washers and nuts onto the all-thread rods (all included). Tighten the nuts until the faucet is secure.
5. Connect the valve and push buttons to the controller.
6. After thorough flushing, connect the valve to the supplies and the faucet to the water line from the valve using the 3/8" PTC Fitting (included).



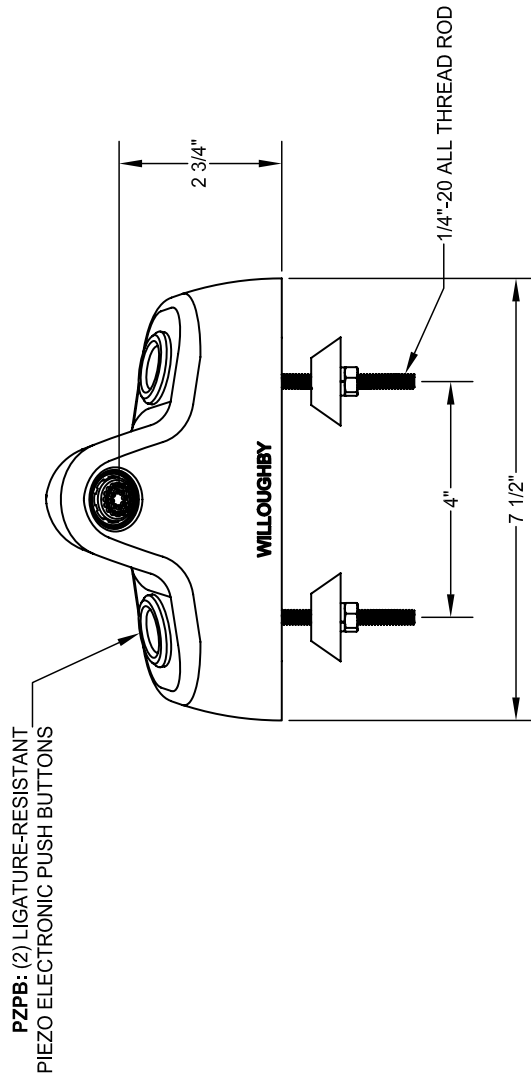
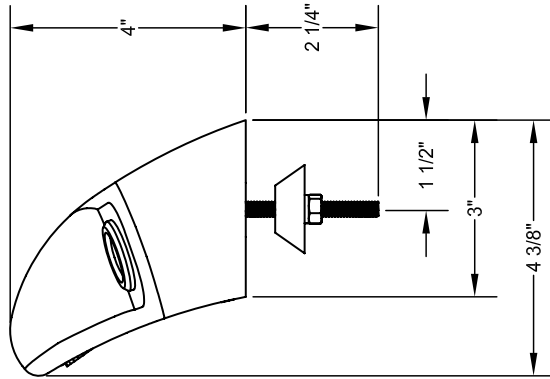
SEE FOLLOWING PAGES FOR FAUCET DIMENSIONS AND PART NUMBERS



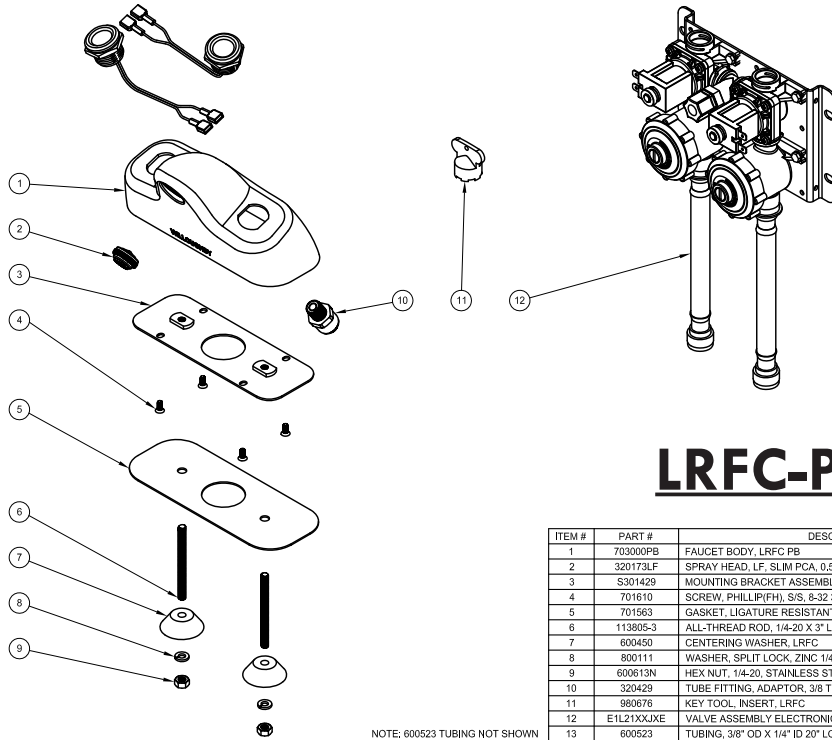
(LRFC-PBH) FAUCET Dimensions



(LRFC-PZPB) FAUCET Dimensions



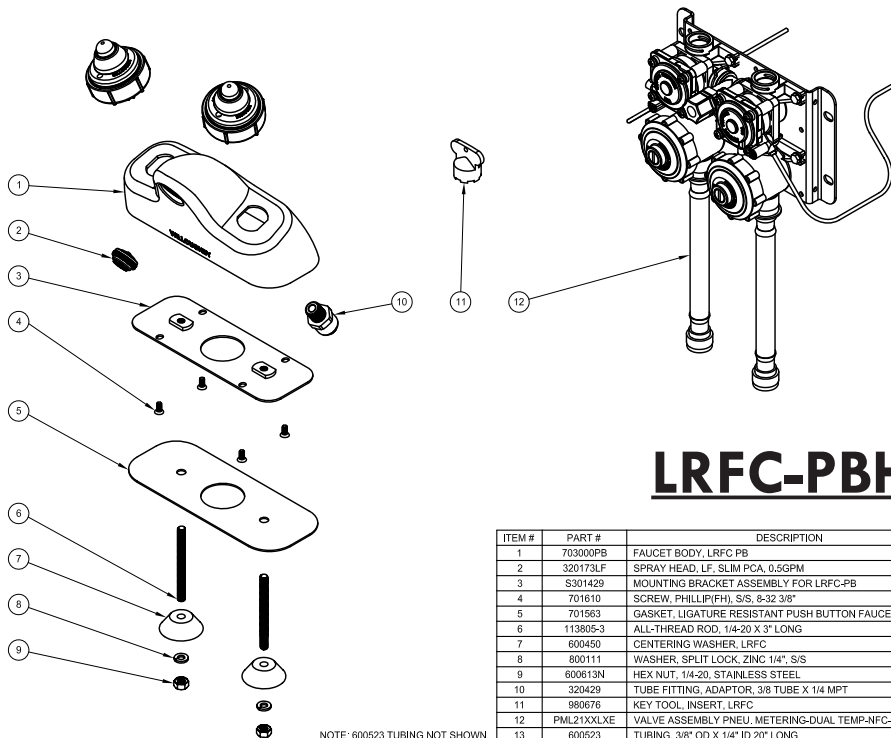
(LRFC-PB) FAUCET Part Numbers



LRFC-PZPB

ITEM #	PART #	DESCRIPTION	QTY.
1	703000PB	FAUCET BODY, LRFC PB	1
2	320173LF	SPRAY HEAD, LF, SLIM PCA, 0.5GPM	1
3	S301429	MOUNTING BRACKET ASSEMBLY FOR LRFC-PB	1
4	701610	SCREW, PHILLIP(FH), S/S, 8-32 3/8"	2
5	701563	GASKET, LIGATURE RESISTANT PUSH BUTTON FAUCET	1
6	113805-3	ALL-THREAD ROD, 1/4-20 X 3" LONG	2
7	600450	CENTERING WASHER, LRFC	2
8	800111	WASHER, SPLIT LOCK, ZINC 1/4", S/S	1
9	600613N	HEX NUT, 1/4-20, STAINLESS STEEL	1
10	320429	TUBE FITTING, ADAPTOR, 3/8 TUBE X 1/4 MPT	1
11	980676	KEY TOOL, INSERT, LRFC	1
12	E1L21XXJXE	VALVE ASSEMBLY ELECTRONIC DUAL TEMP-NFC-LEAD FREE	1
13	600523	TUBING, 3/8" OD X 1/4" ID 20" LONG	1

NOTE: 600523 TUBING NOT SHOWN

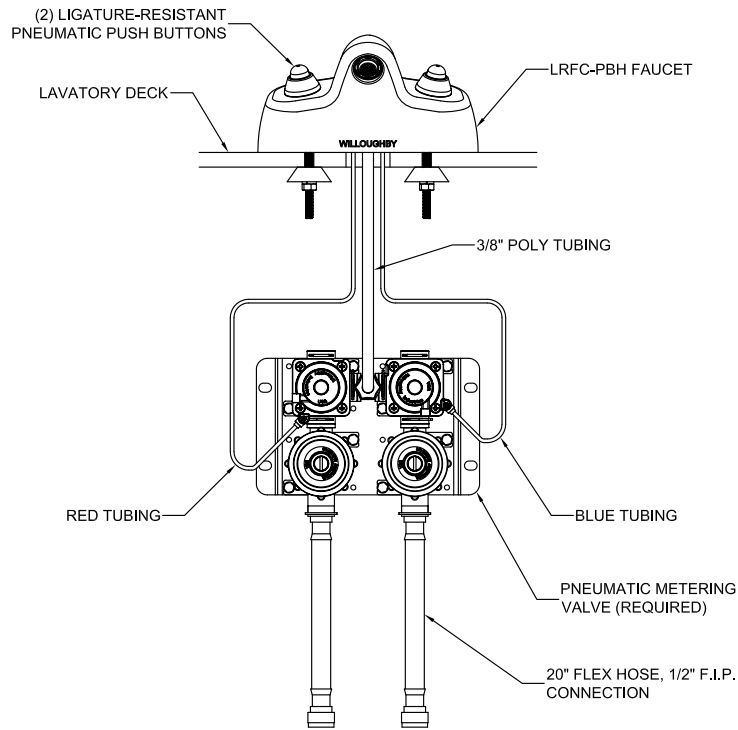


LRFC-PBH

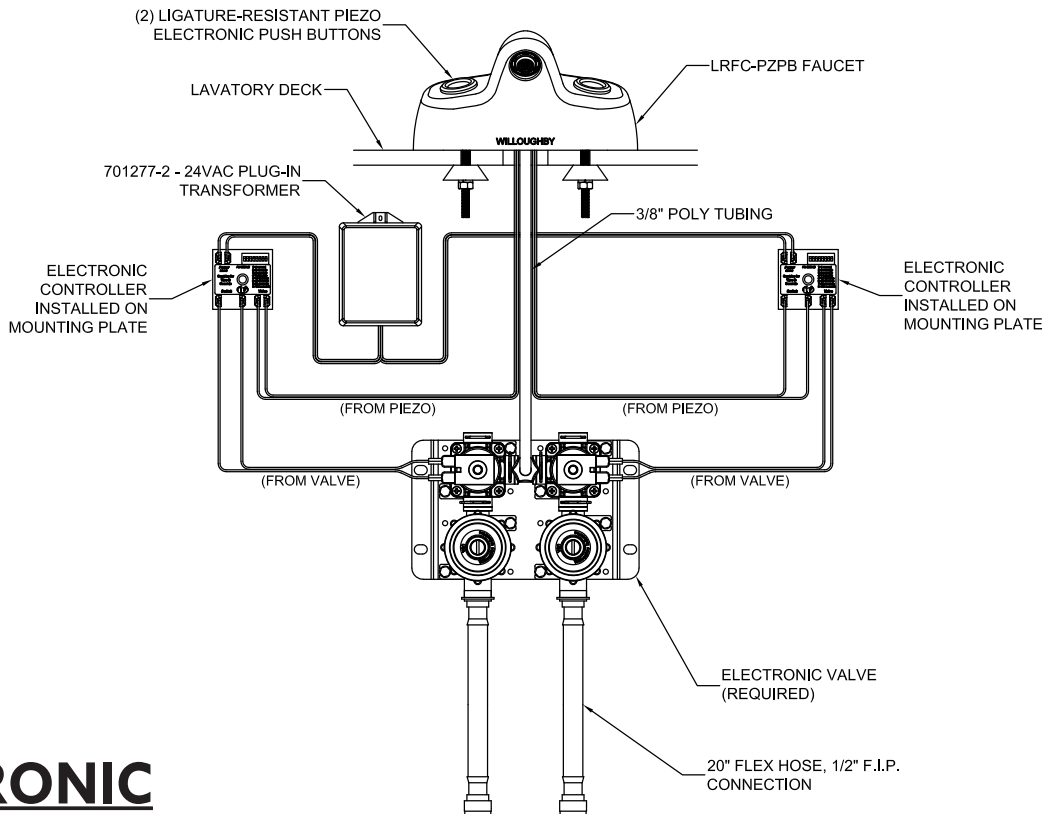
ITEM #	PART #	DESCRIPTION	QTY.
1	703000PB	FAUCET BODY, LRFC PB	1
2	320173LF	SPRAY HEAD, LF, SLIM PCA, 0.5GPM	1
3	S301429	MOUNTING BRACKET ASSEMBLY FOR LRFC-PB	1
4	701610	SCREW, PHILLIP(FH), S/S, 8-32 3/8"	2
5	701563	GASKET, LIGATURE RESISTANT PUSH BUTTON FAUCET	1
6	113805-3	ALL-THREAD ROD, 1/4-20 X 3" LONG	2
7	600450	CENTERING WASHER, LRFC	2
8	800111	WASHER, SPLIT LOCK, ZINC 1/4", S/S	1
9	600613N	HEX NUT, 1/4-20, STAINLESS STEEL	1
10	320429	TUBE FITTING, ADAPTOR, 3/8 TUBE X 1/4 MPT	1
11	980676	KEY TOOL, INSERT, LRFC	1
12	PML21XXJXE	VALVE ASSEMBLY PNEU. METERING-DUAL TEMP-NFC-LEAD FREE	1
13	600523	TUBING, 3/8" OD X 1/4" ID 20" LONG	1

NOTE: 600523 TUBING NOT SHOWN

(LRFC-PB) FAUCET Installed

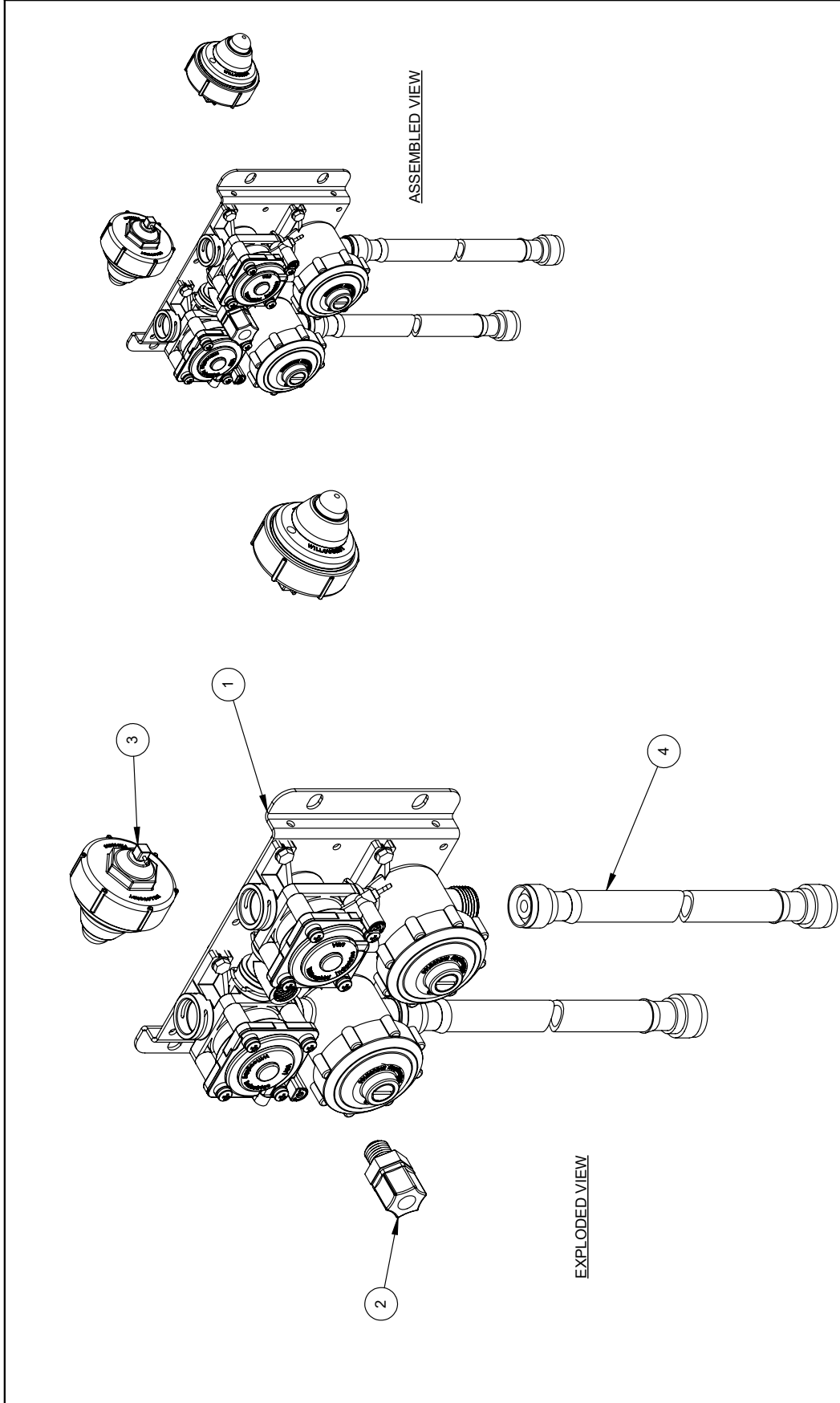


PNEUMATIC



ELECTRONIC

DRAWING: Pneumatic Valve Detail



ITEM #	PART #	DESCRIPTION	QTY.
1	PML21XXXXX	VALVE ASSY PNEU. METERING-DUAL TEMP-NFC-LEAD FREE	1
2	321010	3/8" TUBE x 1/4" MPT CONNECTOR	1
3	600305LR	PNEU. PUSH BUTTON, LIGATURE-RESISTANT W/90 DEGREE BARB	2
4	980520	20" FLEX HOSE, 1/2" I.P. CONNECTION	2

Willoughby Industries, Inc.
 Indianapolis, Indiana

TOLERANCES EXCEPT AS NOTED

2 PLS. ±0.03
 3 PLS. ±0.015
 FINISH: 12.5 μm

SCALE: 1:8

REF: 1:8

DATE: A

REVISION: A

ORIG. COR 10/27/22

REV.: JDR 8/3/23

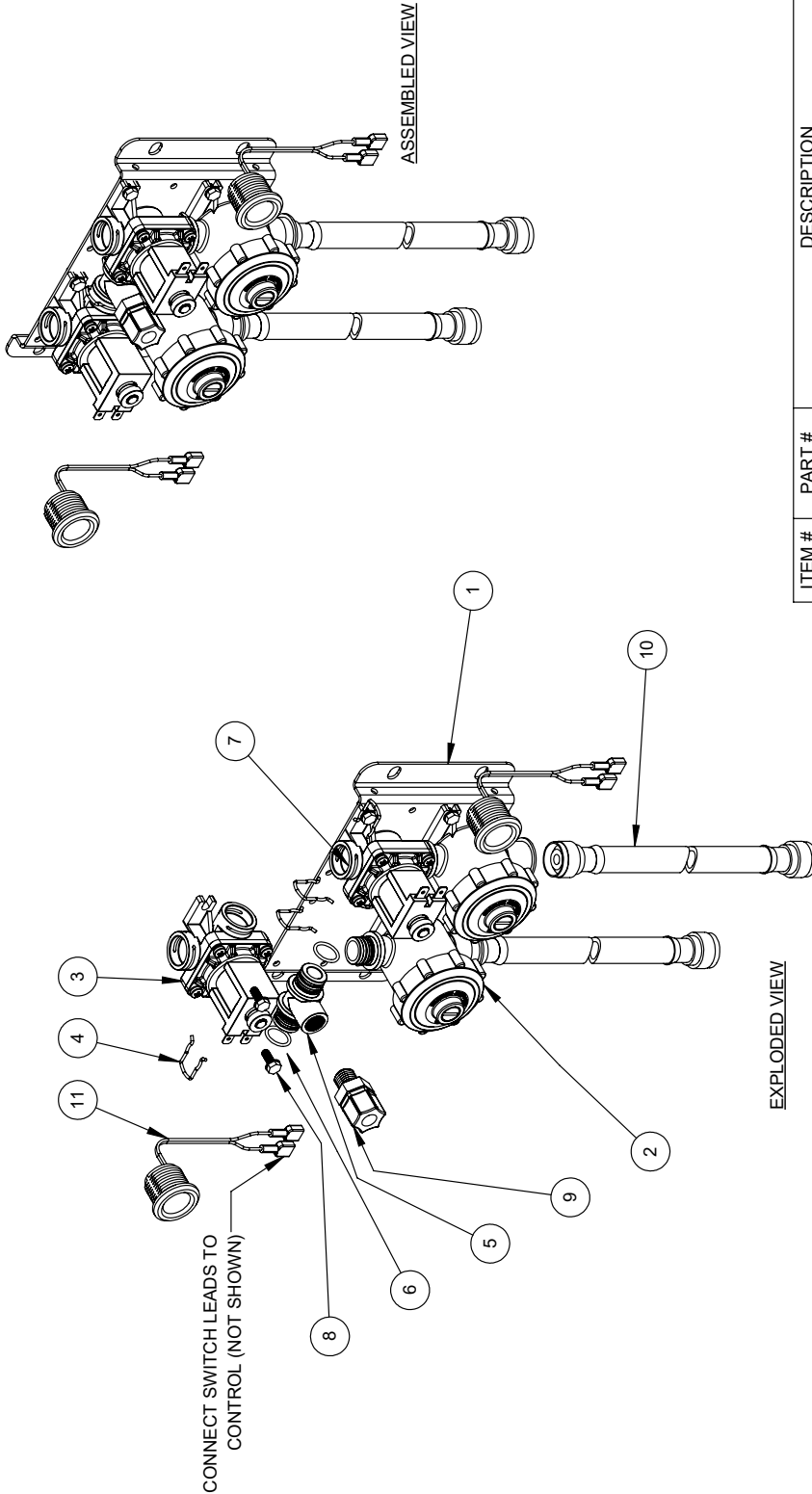
STANDARD BHEET: 1 OF 1

PART # PML21XXXLXE

TITLE / DESC: VALVE ASSEMBLY PNEU. METERING-DUAL TEMP-NFC-LEAD FREE



DRAWING: 24V Electronic Valve Detail



ITEM #	PART #	DESCRIPTION	QTY.
1	980502	PML2 VALVE BRACKET	1
2	980183	CHECKSTOP ASSEMBLY	2
3	980408PR	E1L VALVE ASSEMBLY - RIGHT PLUGGED PORT	1
4	980140	SPRING CLIP - ROUND	4
5	980196	TEE, PLASTIC MOLDED	1
6	980164	O-RING, #015	2
7	980408PL	E1L VALVE ASSEMBLY - RIGHT PLUGGED PORT	1
8	800133	#10-16 SELF-TAP TYPE B HEX HEAD SCREW	8
9	321010	3/8" TUBE x 1/4" MPT CONNECTOR	1
10	980520	20" FLEX HOSE, 1/2 F.I.P. CONNECTION	2
11	701179-C	LIGATURE RESISTANT PIEZO SWITCH	2

Willoughby Industries, Inc.
 Indianapolis, Indiana

TOLERANCES UNLESS OTHERWISE SPECIFIED:
 2 PLCS: ±0.03
 3 PLCS: ±0.015
 EXCEPT AS NOTED

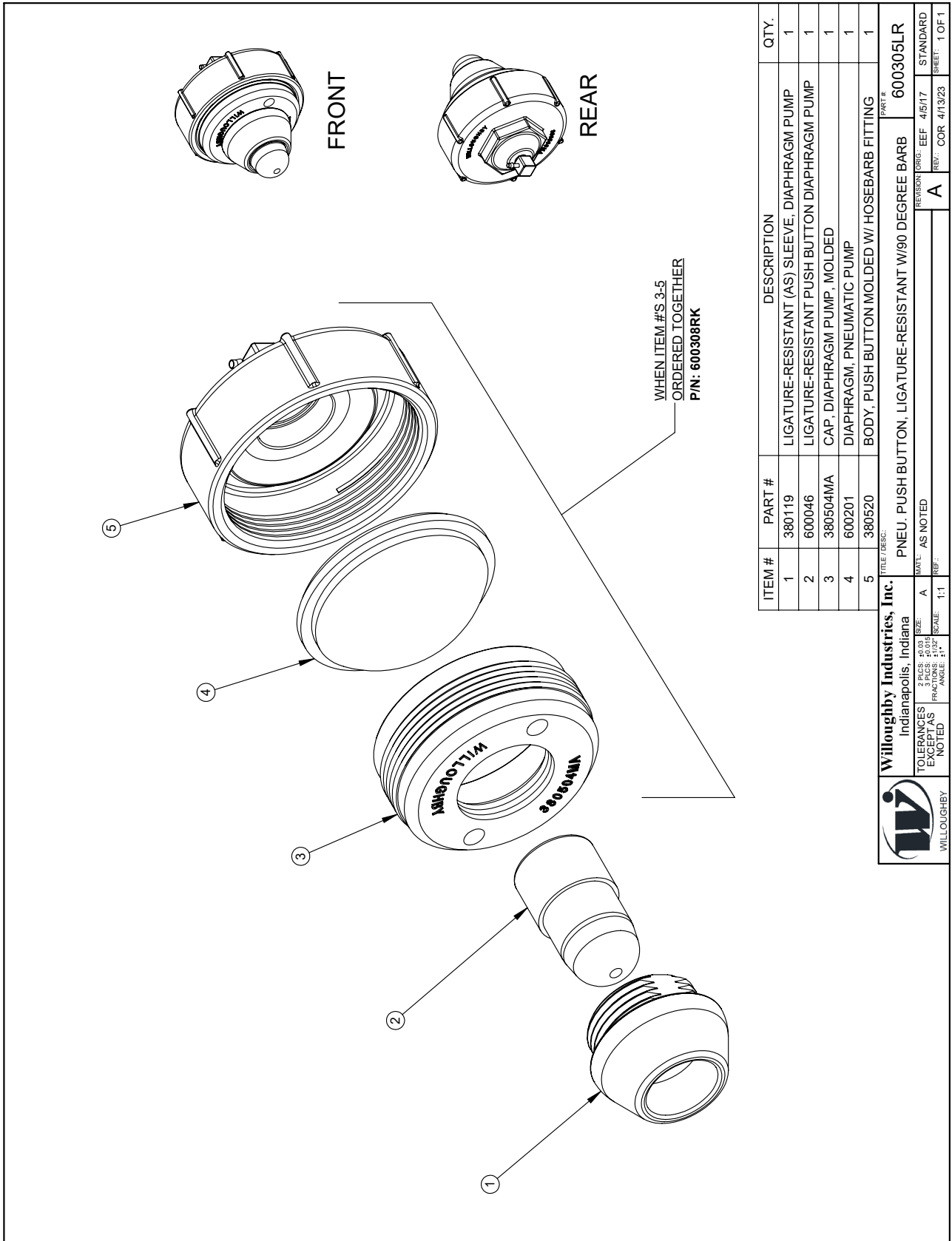
FRAMING SCALE: 1:4
 ANGLE: 1"

WILLOUGHBY

TITLE / DESC: VALVE ASSY ELECTRONIC DUAL TEMP - NFC - LEAD FREE
 PART #: E1L21XXJXE
 MATL: N/A
 REF: A

REVISION: ORIG: COR 10/27/22
 REV: COR 10/27/22
 STANDARD SHEET: 1 OF 1

DRAWING: Pneumatic Push Button Detail



ITEM #	PART #	DESCRIPTION	QTY.
1	380119	LIGATURE-RESISTANT (AS) SLEEVE, DIAPHRAGM PUMP	1
2	600046	LIGATURE-RESISTANT PUSH BUTTON DIAPHRAGM PUMP	1
3	380504MA	CAP, DIAPHRAGM PUMP, MOLDED	1
4	600201	DIAPHRAGM, PNEUMATIC PUMP	1
5	380520	BODY, PUSH BUTTON MOLDED W/ HOSEBARB FITTING	1

Willoughby Industries, Inc.
 Indianapolis, Indiana

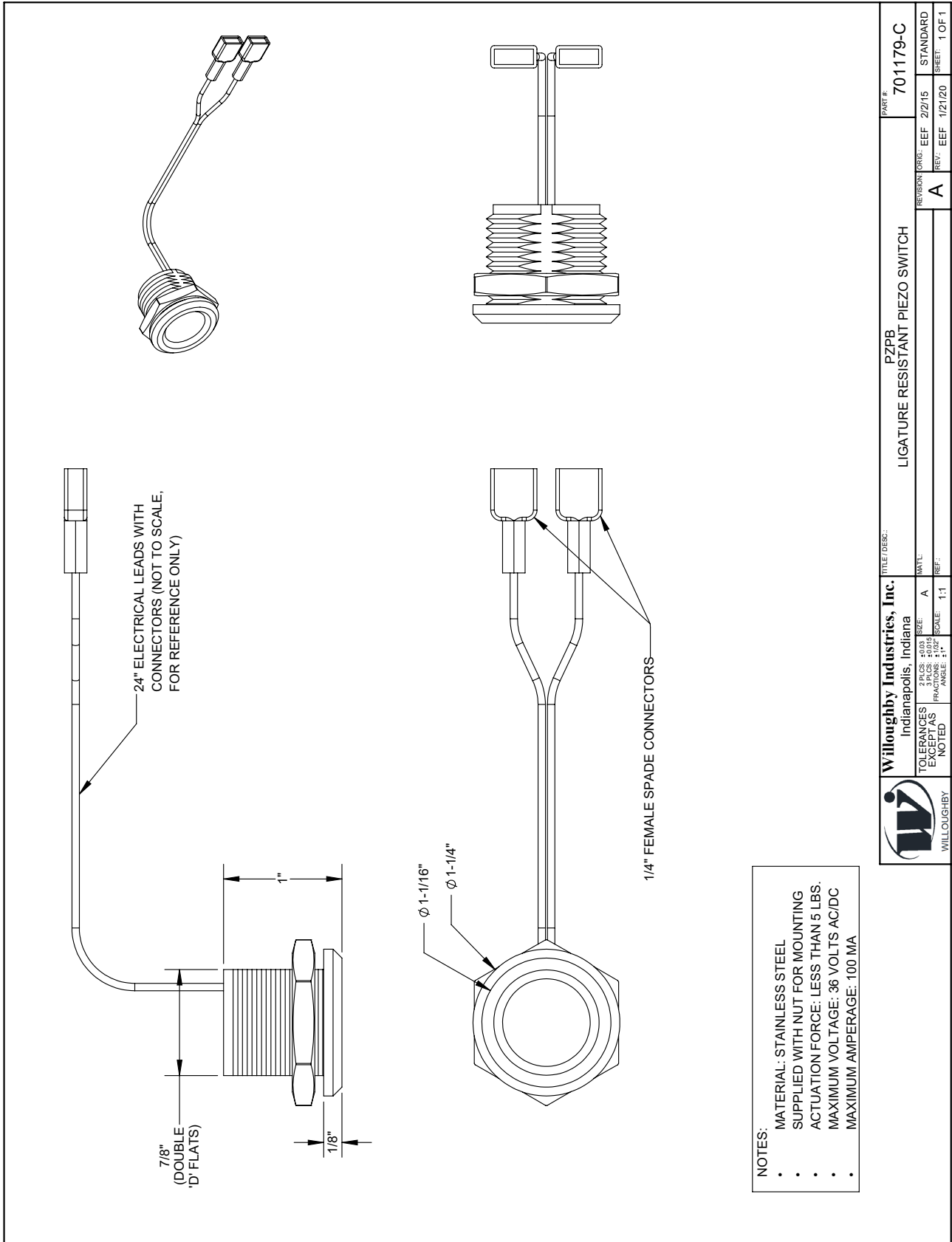
TOLERANCES: 3 PLS: 20.001
 EXACT AS NOTED FRACTIONS: 1/32" SCALE: 1:1

DATE: AS NOTED
 REVISION: A

REVISION: COR: 4/19/23
 EFF: 4/5/17
 STANDARD: 1 OF 1

WILLOUGHBY

DRAWING: Pneumatic Push Button Detail



Willoughby Industries, Inc. Indianapolis, Indiana		TITLE/DESC: PZPB LIGATURE RESISTANT PIEZO SWITCH		PART #: 701179-C	
TOLERANCES EXCEPT AS NOTED	2 PLS: ±0.03 FRACTIONS: 1/32"	SCALE: 1:1	DATE: A	REV: EEF	12/21/20
			REV: EEF	12/21/20	SHEET: 1 OF 1