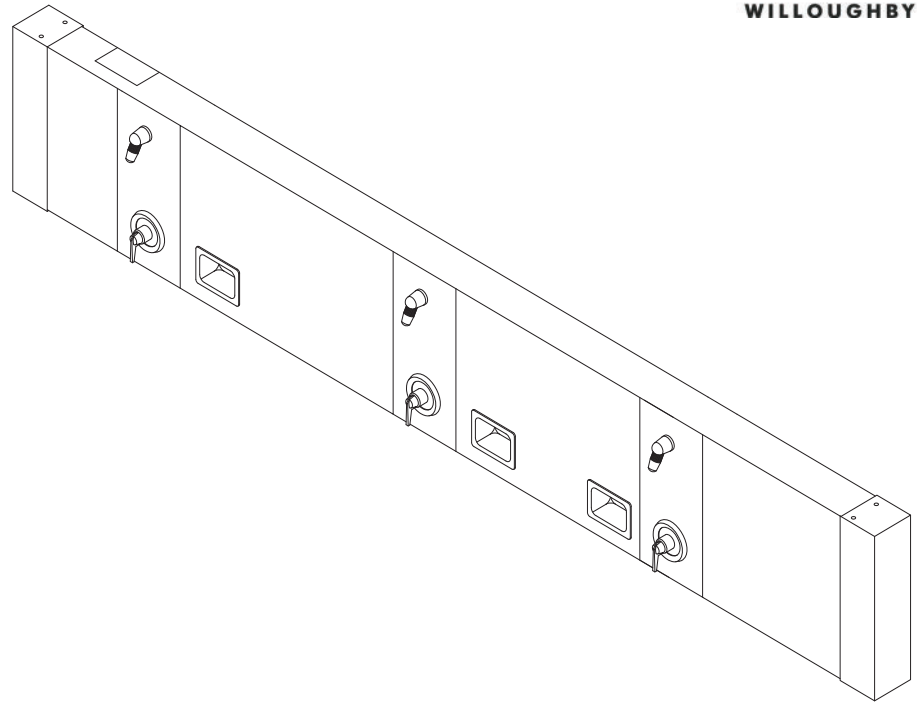




## CWCWS Series Continuous Wall Shower



*(Unit may be shown with optional features)*

To specify fixture and accessories, use the Model Number and Options page.

Example: To specify a Continuous Wall Shower system with (3) stations, temp./pressure-balancing mixing valves, standard 2.5 GPM flow rate, standard APS adjustable vandal-resistant shower heads, and recessed soap dishes

Use the following Willoughby Model Number:  
**CWCWS-3-TPV-2.5-APS-RD**

### Recommended Specifications

Continuous Wall Shower system shall be:  
Willoughby Model No. **CWCWS**  
(Select from model number and options list on next page)

Shower housing shall be fabricated from 16 gauge, Type 304 stainless steel with exposed stainless surfaces polished to a #4 satin finish.

Standard equipment shall include:

- Shower valves (from Valve Selection options list)
- Shower heads (from Shower Head Selection options list)
- Individual shower station panels fastened with vandal resistant security screws

Standard spacing between shower heads shall be 36"

Shower unit shall be factory pre-piped, tested for proper operation and ready for installation by contractor. Anchoring shall be by mounting bracket with Uni-Strut for supplies, with anchoring hardware by others. Unit requires no chase area for installation and maintenance.

Optional WaterSense Labeled ligature-resistant shower head available (LRSH).

Note: Continuous wall shower systems are designed for each specific application. **Contractor shall furnish to manufacturer exact field dimensions prior to fabrication.**

NUMBER OF SHOWER HEADS	INLET DIAMETER*
1 TO 4	3/4"
5 TO 8	1"
9 TO 11	1 1/4"
12+	1 1/2"

\*BASED ON 45 PSI INLET PRESSURE



**WARNING:** Cancer and Reproductive Harm

- [www.P65Warnings.ca.gov](http://www.P65Warnings.ca.gov)



MADE IN THE U.S.A.

visit our website at [www.willoughby-ind.com](http://www.willoughby-ind.com)  
5105 West 78th Street • Indianapolis, IN. 46268  
(317) 875-0830 • Fax: (317) 875-0837 • (800) 428-4065

# MODEL NUMBER AND OPTIONS:

**1.) Base Model Number:**

- CWCWS Continuous Wall Shower

**2.) Shower Stations:**

- Number of Shower Stations (must specify): \_\_\_\_\_

**3.) Valve Selection:**

- NV No Valve (Provided by Others)  
 Special Hole Punching Dimension: \_\_\_\_\_
- PML1 Single Temp. Pneumatic Metering  
 PML2 Dual Temp. Pneumatic Metering  
 E1L1 Single Temp. Electronic (Pick Control)\*  
 E1L2 Dual Temp. Electronic (Pick Control)\*  
 PBV Pressure-Balancing Mixing Valve  
 TPV Temperature/Pressure-Balancing Mixing Valve  
 TPLR Ligature-resistant Temp/Pressure-balancing Mixing Valve\*\*  
 SVC Single Temp. Compression Valve  
 DVC Dual Temp. Compression Valves  
 MA2 **Valve Manifold Option** (Pneumatic or Electronic Valves Only):  
*(See the Manifold Option Page at the end of Catalog Section C14 for further information)*

**4.) Push Button Selection:**

- Pneumatic or Electronic Valves Only:*  
 PBH Ligature-resistant Pneumatic Push Buttons\*\*  
 PZPB Ligature-resistant Piezo Electronic Push Buttons\*/\*\*

**5.) Flow Rates:**

- 2.5 GPM (Standard)     2.0 GPM     1.5 GPM

**6.) Electronic Control\* (Must Use Electronic Push Button):**

- WUSC-2200     WUSC-2400     Pneutronic

**7.) Shower Head Selection:**

- APS Adjustable Vandal-resistant Shower Head  
 NPS Non-Adjustable Vandal-resistant Shower Head  
 UBJ Universal Ball Joint Shower Head (2.0 GPM Flow Rate Only)  
 LBJ Lockable Ball Joint Shower Head (2.0 GPM Flow Rate Only)  
 CSH Ligature-resistant Shower Head\*\*  
 FX Hand-held Flexshower Head (w/ quick disconnect, vacuum breaker, and (1) hook)  
 LRSH Ligature-resistant Shower Head, WaterSense Labeled Insert (1.5 GPM & 2.0 GPM Flow Rate only) \*\*

**8.) Other Options:**

- TF24H Hard-wired Transformer, 110VAC to 24VAC\* (Standard)  
 TF24P Plug-in Transformer, 110VAC to 24VAC\*  
 TMV Inline Thermostatic Mixing Valve  
 SD Surface Mounted Soap Dish  
 RD Recessed Mounted Soap Dish  
 PS Pipe Shroud (Specify Length): \_\_\_\_\_
- HCA Handicap Accessible Shower Station (1 station will include: Diverter Valve, Hand-held Flexshower Head, and 1 Flexshower Hook)
- Other \_\_\_\_\_  
 Other \_\_\_\_\_

\*(Req. 110V power through ground fault interrupter (GFCI) receptacle / breaker)

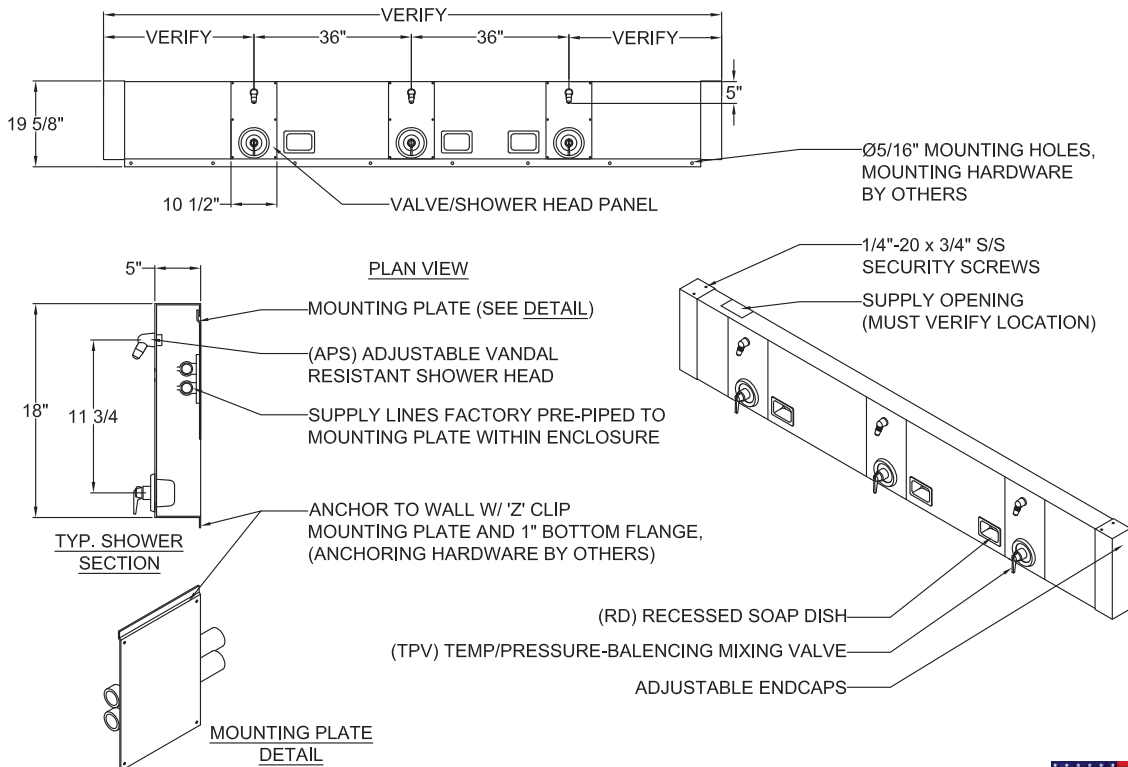
**\*\*LIGATURE-RESISTANT DISCLAIMER**

This product is designed to minimize ligature points. While every effort has been made to reduce the possibility of ligature points, this product does not eliminate all risks. Ligature-Resistant products by Willoughby Industries are to be used in conjunction with, not as a replacement for, trained professionals.

Approved For Manufacturing By: \_\_\_\_\_ Date: \_\_\_\_\_ Company: \_\_\_\_\_  
 Wall Thickness: \_\_\_\_\_ Wall Type: \_\_\_\_\_

**CONTRACTOR SHALL FURNISH TO MANUFACTURER EXACT FIELD DIMENSIONS PRIOR TO FABRICATION**

**VERIFY ALL DIMENSIONS WITH FACTORY PRIOR TO ROUGH-IN**  
 WILLOUGHBY RESERVES THE RIGHT TO MAKE CHANGES IN DESIGN AND DIMENSIONS WITHOUT FORMAL NOTICE AND WITHOUT INCURRING OBLIGATION.



visit our website at [www.willoughby-ind.com](http://www.willoughby-ind.com)  
 5105 West 78th Street • Indianapolis, IN. 46268  
 (317) 875-0830 • Fax: (317) 875-0837 • (800) 428-4065



MADE IN THE U.S.A.