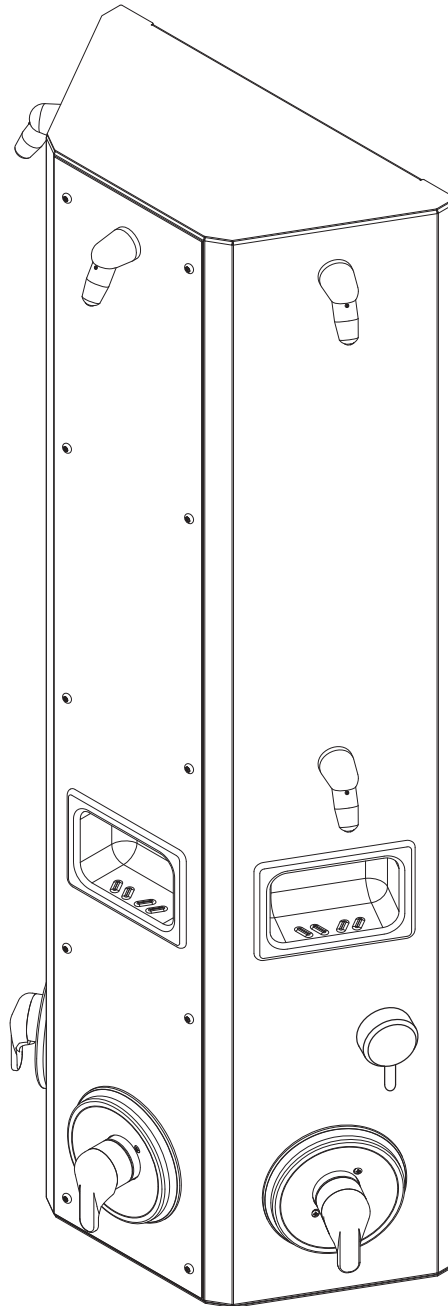


## CWTS-HCA Series Handicap Accessible Three Station Surface Mounted Wall Shower



### Recommended Specifications

Handicap Accessible, Three Station, Surface Mounted Wall Shower shall be: Willoughby Model No. **CWTS-HCA**  
(Select from model number and options list on next page)

Shower cabinet shall be fabricated from 16 gauge, Type 304 stainless steel with exposed stainless surfaces polished to a #4 satin finish. Wall bracket shall be fabricated from 16 gauge, Type 304 stainless steel.

Standard equipment shall include:

- Shower valves (from Valve Selection options list)
- Shower head (from Shower Head Selection options list)
- Mounting bracket

Shower face plate shall attach to mounting bracket with vandal resistant stainless steel security screws. Mounting bracket anchoring hardware by others. Unit requires no chase area for installation and maintenance.

#### Handicap Accessible:

The CWTS-HCA surface mounted shower will have one HCA station per shower fixture and conform to most, but not all, ADA requirements. (Compliance shall be subject to the requirements of the local code authority based on installation-specific details and is the responsibility of the installer.)

Optional WaterSense Labeled ligature-resistant shower head available (LRSH).

**RIGHT HAND HCA STATION SHOWN**  
*(Unit may be shown with optional features)*

To specify fixture and accessories, use the Model Number and Options page.  
Example: To specify a Handicap Accessible, Three Station, Surface Mounted Wall Shower with right hand HCA shower station, temp./pressure-balancing mixing valve, diverter valve, 2.5 GPM flow rate, (2) APS adjustable vandal-resistant shower heads, and recessed soap dish  
Use the following Willoughby Model Number:  
**CWTS-HCA-R-TPV-DV-2.5-APS-2HD-RD**



**WARNING:** Cancer and Reproductive Harm

- [www.P65Warnings.ca.gov](http://www.P65Warnings.ca.gov)



MADE IN THE U.S.A.

visit our website at [www.willoughby-ind.com](http://www.willoughby-ind.com)  
5105 West 78th Street • Indianapolis, IN. 46268  
(317) 875-0830 • Fax: (317) 875-0837 • (800) 428-4065

# MODEL NUMBER AND OPTIONS:

## 1.) Base Model Number:

- CWTS-HCA Handicap Accessible, Three Station, Surface Mounted Wall Shower

## 2.) Shower Orientation (Must Specify):

- L Left Hand HCA Shower Station  
 R Right Hand HCA Shower Station

## 3.) Valve Selection:

- NV No Valve (Provided by Others)  
 Special Hole Punching Dimension:
- PML1 Single Temp. Pneumatic Metering  
 PML2 Dual Temp. Pneumatic Metering  
 E1L1 Single Temp. Electronic (Pick Control)\*  
 E1L2 Dual Temp. Electronic (Pick Control)\*  
 PBV Pressure-Balancing Mixing Valve  
 TPV Temperature/Pressure-Balancing Mixing Valve  
 TPLR Ligature-resistant Temp/Pressure-balancing Mixing Valve\*\*  
 SVCL Single Temp. Compression Valve (w/ ADA lever handle)  
 DVCL Dual Temp. Compression Valves (w/ ADA lever handle)

## 4.) Diverter Valve:

- DV Diverter Valve  
 DVLR Ligature-resistant Diverter Valve\*\*  
 PML1-MA2 Two Single Temp. Pneumatic Metering Valves  
 (Used to divert water flow to either upper, lower, or both shower heads; for use with Mixing Valve options above)

## 5.) Push Button Selection:

*Pneumatic or Electronic Valves Only:*

- PBH Ligature-resistant Pneumatic Push Buttons\*\*  
 PZPB Ligature-resistant Piezo Electronic Push Buttons\*\*/\*\*

## 6.) Flow Rates:

- 2.5 GPM (Standard)  2.0 GPM  1.5 GPM

## 7.) Electronic Control\* (Must Use Electronic Push Button):

- WUSC-2200  WUSC-2400  Pneumatic

## 8.) Shower Head Selection:

- APS Adjustable Vandal-resistant Shower Head  
 NPS Non-Adjustable Vandal-resistant Shower Head  
 UBJ Universal Ball Joint Shower Head (2.0 GPM Flow Rate Only)  
 LBJ Lockable Ball Joint Shower Head (2.0 GPM Flow Rate Only)  
 CSH Ligature-resistant Shower Head\*\*  
 FX Hand-held Flexshower Head (w/ quick disconnect, vacuum breaker, and (1) hook)  
 LRSH Ligature-resistant Shower Head, WaterSense Labeled Insert  
 (1.5 GPM & 2.0 GPM Flow Rate only) \*\*  
 2HD Dual Fixed Shower Heads (replaces (FX) Flexshower head w/ second of the selected fixed Shower Head)

## 9.) Other Options:

- TF24H Hard-wired Transformer, 110VAC to 24VAC\* (Standard)  
 TF24P Plug-in Transformer, 110VAC to 24VAC\*  
 TMV Inline Thermostatic Mixing Valve  
 HL Hi-Lo (2 Hooks For Flexshower, Wall Mounted)  
 SLB24 24" Adjustable Slide Bar (for Flexshower, Wall Mounted)  
 SD Surface Mounted Soap Dish  
 RD Recessed Mounted Soap Dish  
 PS Pipe Shroud (Specify Length): \_\_\_\_\_  
 Other \_\_\_\_\_

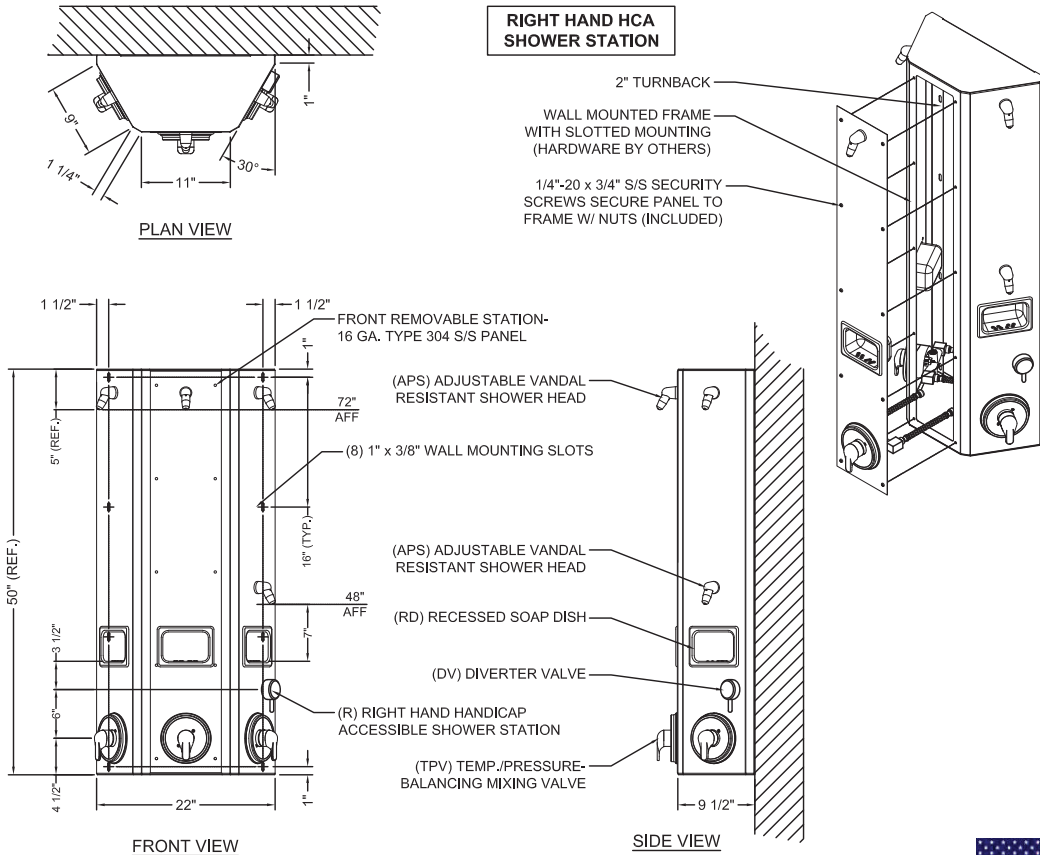
\* (Req. 110V power through ground fault interrupter (GFCI) receptacle / breaker)

## \*\*LIGATURE-RESISTANT DISCLAIMER

This product is designed to minimize ligature points. While every effort has been made to reduce the possibility of ligature points, this product does not eliminate all risks. Ligature-Resistant products by Willoughby Industries are to be used in conjunction with, not as a replacement for, trained professionals.

Approved For Manufacturing By: \_\_\_\_\_ Date: \_\_\_\_\_ Company: \_\_\_\_\_  
 Wall Thickness: \_\_\_\_\_ Wall Type: \_\_\_\_\_

**VERIFY ALL DIMENSIONS WITH FACTORY PRIOR TO ROUGH-IN**  
 WILLOUGHBY RESERVES THE RIGHT TO MAKE CHANGES IN DESIGN AND DIMENSIONS WITHOUT FORMAL NOTICE AND WITHOUT INCURRING OBLIGATION.



FRONT VIEW

SIDE VIEW

visit our website at [www.willoughby-ind.com](http://www.willoughby-ind.com)

5105 West 78th Street • Indianapolis, IN. 46268

(317) 875-0830 • Fax: (317) 875-0837 • (800) 428-4065



MADE IN THE U.S.A.