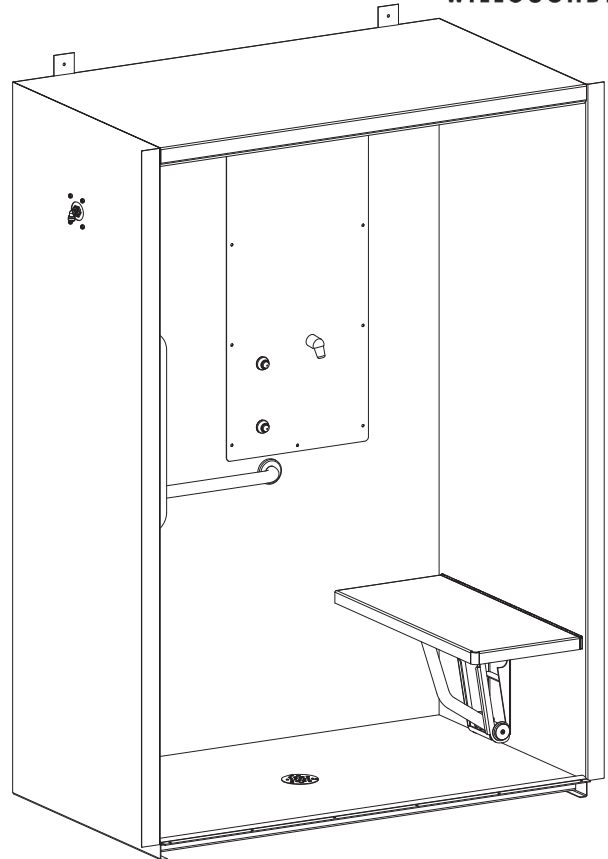


ADA Compliant Front Access Roll-In Cabinet Shower



Please provide shower finish schedule upon ordering.
(Unit may be shown with optional features)

Recommended Specifications

Roll-In Front Access Handicap Cabinet Shower shall be:
Willoughby Model No. **S-3660-HC-FA**
(Select from model number and options list on next page)

Shower cabinet shall be fabricated from 14 GA., Type 304 stainless steel. Shower floor shall be fabricated from 11 GA., Type 304 stainless steel. The construction shall be **all-welded** (unitized models only, not applicable to knockdown models), exposed stainless surfaces polished to a #4 satin finish, except shower floor which shall have a non-slip glass blast finish.

Standard equipment shall include:

- (ICD) Inside caulk drain (2") with removable strainer
- (GB24) 24" Horizontally-mounted grab bar
- (GB30) 30" Horizontally-mounted grab bar
- (GB24V) 24" Vertically-mounted grab bar
- (FSS) Fold-up stainless steel shower seat
- 1/2" ADA Threshold with anchor holes

Unit requires no chase area for installation and maintenance. Shower valve and shower head shall be mounted on removable access panel secured with security screws.

Underside of shower floor shall be sound deadened with fire resistant material.

Unit requires 2" recess in floor.

Optional WaterSense Labeled ligature-resistant shower head available (LRSH).

To specify fixture and accessories, use the Model Number and Options page.

Example: To specify a unitized 36" x 60" Roll-In Front Access Handicap Cabinet Shower with ADA-Compliant Right hand back wall shower head/push button/valving, polished front, single temp. pneumatic metering valves, standard ligature-resistant pneumatic push buttons, 2.5 GPM flow rate, two non-adjustable penel shower heads, and standard inside caulk drain

Use the following Willoughby Model Number:

US-3660-HC-FA-R-A4-PML1-MA2-PBH-2.5GPM-NPS-2HD-ICD

The location of the showerhead within the cabinet shower could result in potential water spray outside of the shower compartment. It is highly recommended that a floor drain be utilized at or near the shower entrance. The floor drain is to be provided by others.

Fixture shall be free-standing, no anchoring required.

To specify Knockdown Cabinet Shower: Select the "KS" model number from the list on the Model Number and Options page.

****NOTE:** US/KS-3660-HC-FA is in compliance with ADA 2010 standards when equipped with valve controls mounted on the Back Wall of the fixture, adjacent to the Fold-up Shower Seat. (Contact your Willoughby representative for further details.)



WARNING: Cancer and Reproductive Harm

- www.P65Warnings.ca.gov



MADE IN THE U.S.A.

visit our website at www.willoughby-ind.com
5105 West 78th Street • Indianapolis, IN. 46268
(317) 875-0830 • Fax: (317) 875-0837 • (800) 428-4065

MODEL NUMBER AND OPTIONS:

1.) Base Model Number:

Unitized Roll-in Handicap Front

Access Cabinet Shower:

US-3660-HC-FA 36"L x 60"W Cabinet Shower

Knockdown Roll-in Handicap Front

Access Cabinet Shower:

KS-3660-HC-FA 36"L x 60"W Cabinet Shower

2.) ADA Shower Head/ Push Button/ Valve Orientation*:

L Left Hand, Back Wall
 R Right Hand, Back Wall

3.) Cabinet Side Exterior Finish Schedule:

(For Back Wall ADA Comp.)

A4 Polished Front only
 Other _____

4.) Valve Selection:

NV No Valve (Provided by Others)
 Special Hole Punching Dimension:

PML1 Single Temp. Pneumatic Metering Ⓢ Ⓜ
 PML2 Dual Temp. Pneumatic Metering Ⓢ Ⓜ
 E1L1 Single Temp. Electronic (Pick Control)** Ⓢ Ⓢ Ⓜ
 E1L2 Dual Temp. Electronic (Pick Control)** Ⓢ Ⓢ Ⓜ
 PBV Pressure-Balancing Mixing Valve
 TPV Temp/Pressure-Balancing Mixing Valve
 TPLR Ligature-resistant Temp/Pressure-Balancing Mixing Valve Ⓜ

Valve Manifold Option:

Pneumatic or Electronic Valves Only:

(See the Manifold Option Page at the end of

Catalog Section 55 for further information)

MA2

5.) Diverter Valve:

DV Diverter Valve
 DVLR Ligature-resistant Diverter Valve Ⓜ
 PML1-MA2 Two Single Temp. Pneumatic Metering Valves in Lieu of Diverter Valve Ⓜ

6.) Push Button Selection:

Pneumatic or Electronic Valves Only:

PBH Ligature-resistant Pneumatic Push Buttons Ⓢ Ⓜ
 PZPB Ligature-resistant Piezo Electronic Push Buttons* Ⓢ Ⓜ

7.) Flow Rates:

2.5 GPM (Standard)
 2.0 GPM
 1.5 GPM

8.) Electronic Controls**

(Must Use Electronic Push Button):

WUSC-2200 WUSC-2400
 Pneumatic WMS II

9.) Shower Head Selection:

APS Adjustable Penal Shower Head
 NPS Non-adjustable Penal Shower Head Ⓢ
 CSH Ligature-resistant Shower Head Ⓢ Ⓜ
 LRSH Ligature-resistant Shower Head, WaterSense Labeled Insert (1.5 GPM & 2.0 GPM Flow Rate available only) Ⓜ
 FX Hand Held Flexshower w/ Quick Disconnect and Vacuum Breaker
 LRFX Ligature-resistant Quick Disconnect Hand Held Shower Ⓜ
 2HD Dual Fixed Shower Heads Ⓢ

10.) Drain Selection:

ICD Inside Caulk Cabinet Shower Drain (2") (Standard)

11.) Options:

VG Ventilation Grille (Specify Free Area and Location; Standard Grille Dimensions: 8-3/4" x 8-3/4" with 15-3/4 in² open area)
 CP Closure Panels (Specify Dimensions and Locations)
 STC Sloping Top Closure
 CR Curtain Rod (Less Curtain and Hooks)
 LRSC Ligature-Resistant Curtain with Track Ⓜ
 TH1 Release Towel Hook Ⓢ Ⓜ
 GBC Grab Bar Closure Plates Ⓢ Ⓜ
 RD Recessed Mounted Soap Dish Ⓢ Ⓜ
 SD Surface Mounted Soap Dish
 TMV In-line Thermostatic Mixing Valve
 TF24H Hard-wired Transformer, 110VAC to 24VAC**
 TF24P Plug-in Transformer, 110VAC to 24VAC**
 LfSS Less Fold-up Stainless Steel Shower Seat (NOTE: In lieu of seat, (1) centered 48" back-wall grab bar and (2) centered 24" side-wall grab bars will be included for ADA compliance)
 LRD5 5" Ligature-resistant Drain Cover Ⓢ Ⓜ
 LRSS Ligature-resistant Fixed Shower Seat, in lieu of fold-up shower seat (Not ADA Compliant) Ⓢ Ⓜ
 Other _____
 Other _____

*NOTE: US/KS-3660-HC-FA is in compliance with ADA 2010 standards when equipped with valve controls mounted on the back wall of the fixture, adjacent to the fold-up shower seat. (Specify when ordering, contact your Willoughby representative for further details.)

** (Req. 110V power through ground fault interrupter (GFCI) receptacle / breaker)

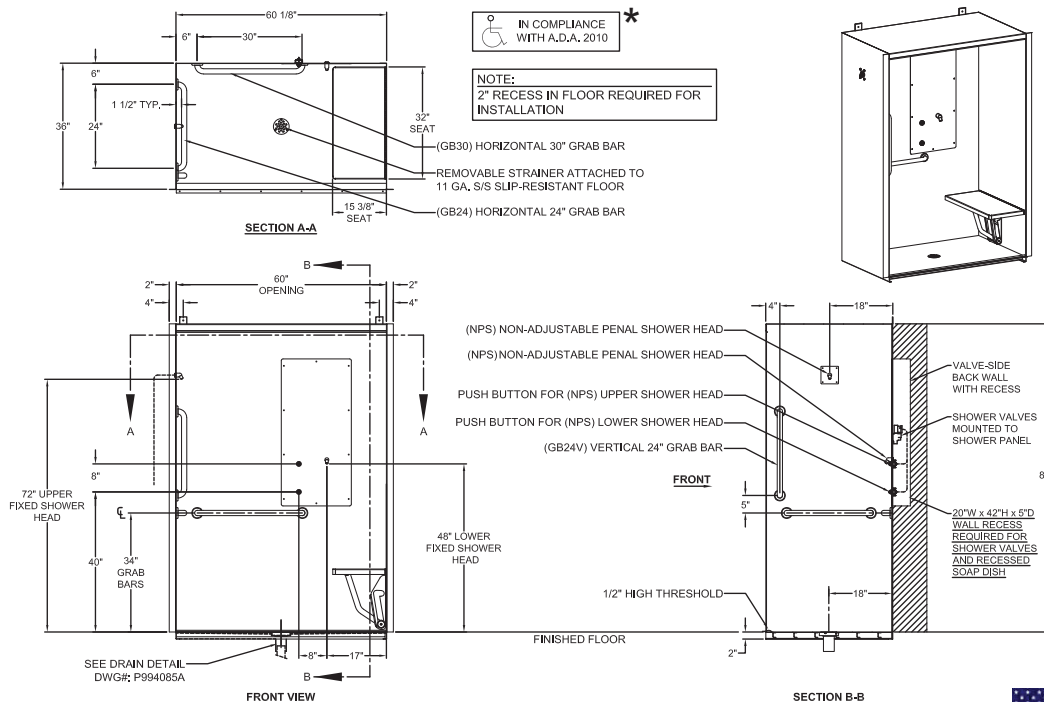
Ⓢ For security applications
 Ⓜ Ligature-resistant option***

***LIGATURE-RESISTANT DISCLAIMER

This product is designed to minimize ligature points. While every effort has been made to reduce the possibility of ligature points, this product does not eliminate all risks. Ligature-Resistant products by Willoughby Industries are to be used in conjunction with, not as a replacement for, trained professionals.

Approved For Manufacturing By: _____ Date: _____ Company: _____
 Wall Thickness: _____ Wall Type: _____

VERIFY ALL DIMENSIONS WITH FACTORY PRIOR TO ROUGH-IN
 WILLOUGHBY RESERVES THE RIGHT TO MAKE CHANGES IN DESIGN AND DIMENSIONS WITHOUT FORMAL NOTICE AND WITHOUT INCURRING OBLIGATION.



visit our website at www.willoughby-ind.com
 5105 West 78th Street • Indianapolis, IN. 46268
 (317) 875-0830 • Fax: (317) 875-0837 • (800) 428-4065



MADE IN THE U.S.A.