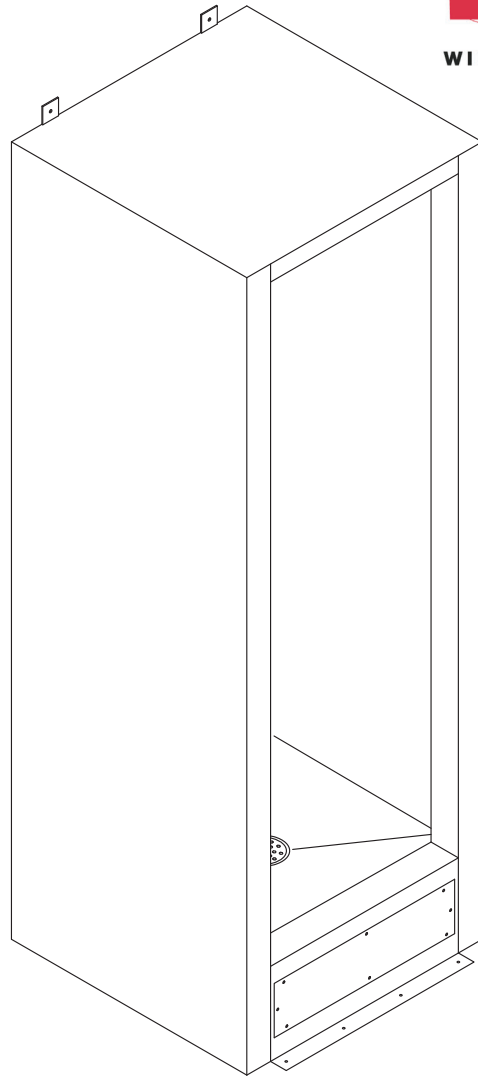


Front Access Cabinet Shower



**Please provide shower finish schedule upon ordering.
(Unit may be shown with optional features)**

Recommended Specifications

Front Access Cabinet Shower shall be:
Willoughby Model No. **S-** **-FA**
(Select from model number and options list on next page)

Shower cabinet shall be fabricated from 14 gauge, Type 304 stainless steel. Shower floor shall be fabricated from 11 gauge, Type 304 stainless steel. The construction shall be **all-welded** (unitized models only, not applicable to knockdown models), exposed stainless surfaces polished to a #4 satin finish, except shower floor which shall have a non-slip glass blast finish.

Standard equipment shall include:
- (NPS) non-adjustable penal shower head, mounted in a corner panel (plumbed to a top supply connection)
- (NHD) No-hub drain with removable strainer

Unit requires no chase area for installation and maintenance. Drain connection shall be through removable front access cover. Shower head and push button shall be mounted in a side mullion.

Underside of shower floor shall be sound deadened with fire resistant material.

To specify fixture and accessories, use the Model Number and Options page.

Example: To specify a unitized 36" x 36" Front Access Cabinet Shower with left hand shower head/valving, back wall with polished front, single temp. pneumatic metering valve, standard ligature-resistant pneumatic push button, 2.5 GPM flow rate, standard non-adjustable penal shower head and standard no-hub drain

Use the following Willoughby Model Number:
US-3636-FA-L-A4-PML1-PBH-2.5GPM-NPS-NHD

To specify Knockdown Cabinet Shower: Select the "KS" model number from the list on the Model Number and Options page.

It is highly recommended that a floor drain be utilized at or near the shower entrance. The floor drain is to be provided by others.

Optional WaterSense Labeled ligature-resistant shower head available (LRSH).



WARNING: Cancer and Reproductive Harm

- www.P65Warnings.ca.gov



MADE IN THE U.S.A.

visit our website at www.willoughby-ind.com
5105 West 78th Street • Indianapolis, IN. 46268
(317) 875-0830 • Fax: (317) 875-0837 • (800) 428-4065

MODEL NUMBER AND OPTIONS:

1.) Base Model Number:

Unitized Front Access Cabinet Showers:

- US-3030-FA 30"L x 30"W Cabinet Shower
- US-3232-FA 32"L x 32"W Cabinet Shower
- US-3636-FA 36"L x 36"W Cabinet Shower

Knockdown Front Access Cabinet Showers:

- KS-3030-FA 30"L x 30"W Cabinet Shower
- KS-3232-FA 32"L x 32"W Cabinet Shower
- KS-3636-FA 36"L x 36"W Cabinet Shower

2.) Shower Head/Push Button Orientation:

- L Left Hand
- R Right Hand

3.) Cabinet Side Exterior Finish Schedule:

(Based on Chase Wall Orientation; see the Options Pages at the end of Catalog Section for diagram)

For (BCS) Back Wall:

- A1 Polished Front, Left Side, & Right Side
- A2 Polished Front & Right Side
- A3 Polished Front & Left Side
- A4 Polished Front only

For (LCS) Left Wall:

- B1 Polished Front, Back Side, & Right Side
- B2 Polished Front & Right Side
- B3 Polished Front only

For (RCS) Right Wall:

- C1 Polished Front, Back Side, & Left Side
- C2 Polished Front & Left Side
- C3 Polished Front only

4.) Valve Selection:

- NV No Valve (Provided by Others)
- Special Hole Punching Dimension:
- PML1 Single Temp. Pneumatic Metering Ⓢ Ⓣ
- PML2 Dual Temp. Pneumatic Metering Ⓢ Ⓣ
- E1L1 Single Temp. Electronic (Pick Control)* Ⓢ Ⓣ
- E1L2 Dual Temp. Electronic (Pick Control)* Ⓢ Ⓣ
- PBV Pressure-Balancing Mixing Valve
- TPV Temp/Pressure-Balancing Mixing Valve
- TPLR Ligature-resistant Temp/Pressure-Balancing Mixing Valve Ⓣ

Valve Manifold Option:

Pneumatic or Electronic Valves Only:

(See the Manifold Option Page at the end of Catalog Section S5 for further information)

- MA2

5.) Push Button Selection:

Pneumatic or Electronic Valves Only:

- PBH Ligature-resistant Pneumatic Push Buttons Ⓢ Ⓣ
- PZPB Ligature-resistant Piezo Electronic Push Buttons* Ⓢ Ⓣ

6.) Flow Rates:

- 2.5 GPM (Standard)
- 2.0 GPM
- 1.5 GPM

7.) Electronic Controls*

(Must Use Electronic Push Button):

- WUSC-2200 WUSC-2400
- Pneutronic WMS II

8.) Shower Head Selection:

- NPS Non-adjustable Penal Shower Head (Standard) Ⓢ
- APS Adjustable Penal Shower Head
- CSH Ligature-resistant Shower Head Ⓢ Ⓣ
- LRSH Ligature-resistant Shower Head, WaterSense Labeled Insert (1.5 GPM & 2.0 GPM Flow Rate available only) Ⓣ

9.) Drain Selection:

- NHD No-hub Cabinet Shower Drain (2") (Standard)
- ICD Inside Caulk Cabinet Shower Drain (2")

10.) Options:

- VG Ventilation Grille (Specify Free Area and Location; Standard Grille Dimensions: 8-3/4" x 8-3/4" with 15-3/4" open area)
- CP Closure Panels (Specify Dimensions and Locations)
- STC Sloping Top Closure
- MD Modesty Door
 - L Hinged Left
 - R Hinged Right
- CR Curtain Rod (Less Curtain and Hooks)
- LRSC Ligature-Resistant Curtain with Track Ⓣ
- TH1 Release Towel Hook Ⓢ Ⓣ
- RD Recessed Mounted Soap Dish Ⓢ Ⓣ
- SD Surface Mounted Soap Dish
- TMV In-line Thermostatic Mixing Valve
- TF24H Hard-wired Transformer, 110VAC to 24VAC*
- TF24P Plug-in Transformer, 110VAC to 24VAC*
- LRD5 5" Ligature-resistant Drain Cover Ⓣ (Requires Drain Modification for EBD & NHD Options)
- Other _____
- Other _____

*(Req. 110V power through ground fault interrupter (GFCI) receptacle / breaker)

Ⓢ For security applications

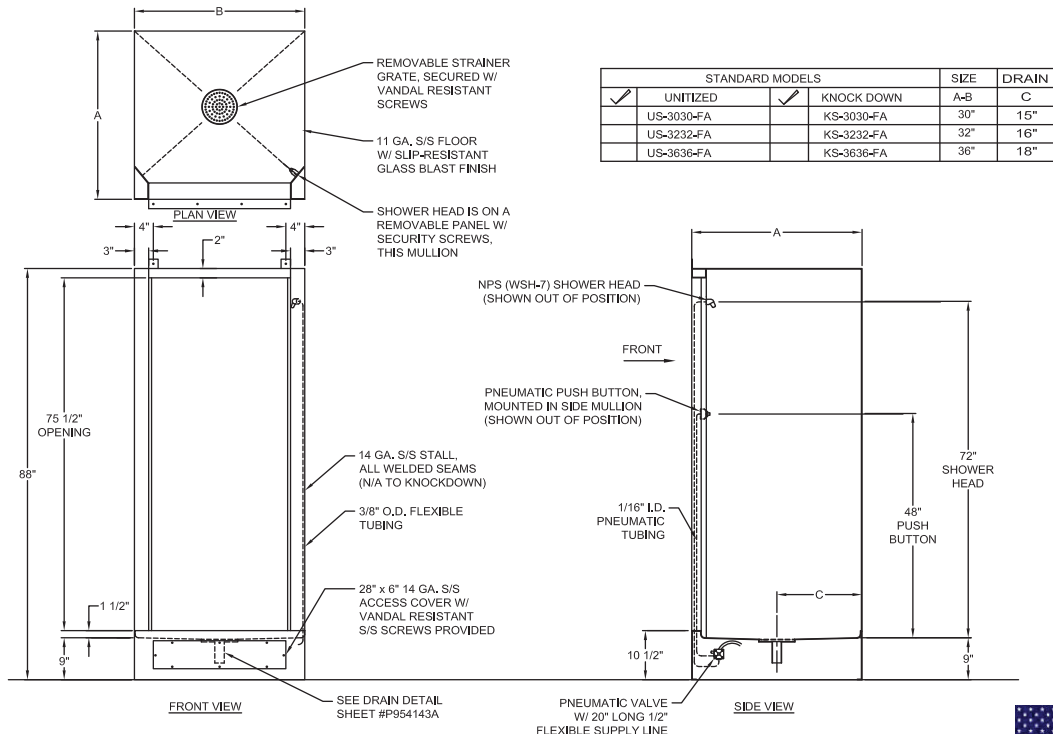
Ⓣ Ligature-resistant option**

**LIGATURE-RESISTANT DISCLAIMER

This product is designed to minimize ligature points. While every effort has been made to reduce the possibility of ligature points, this product does not eliminate all risks. Ligature-Resistant products by Willoughby Industries are to be used in conjunction with, not as a replacement for, trained professionals.

Approved For Manufacturing By: _____ Date: _____ Company: _____
 Wall Thickness: _____ Wall Type: _____

VERIFY ALL DIMENSIONS WITH FACTORY PRIOR TO ROUGH-IN
 WILLOUGHBY RESERVES THE RIGHT TO MAKE CHANGES IN DESIGN AND DIMENSIONS WITHOUT FORMAL NOTICE AND WITHOUT INCURRING OBLIGATION.



visit our website at www.willoughby-ind.com
 5105 West 78th Street • Indianapolis, IN. 46268
 (317) 875-0830 • Fax: (317) 875-0837 • (800) 428-4065



MADE IN THE U.S.A.