

## WRS-FA-ADA Series ADA-Compliant Front Mounted Recessed Shower Panel



### Recommended Specifications

ADA-Compliant, Front Mounted, Recessed Shower Panel shall be: Willoughby Model No. **WRS-FA-ADA**  
(Select from model number and options list on next page)

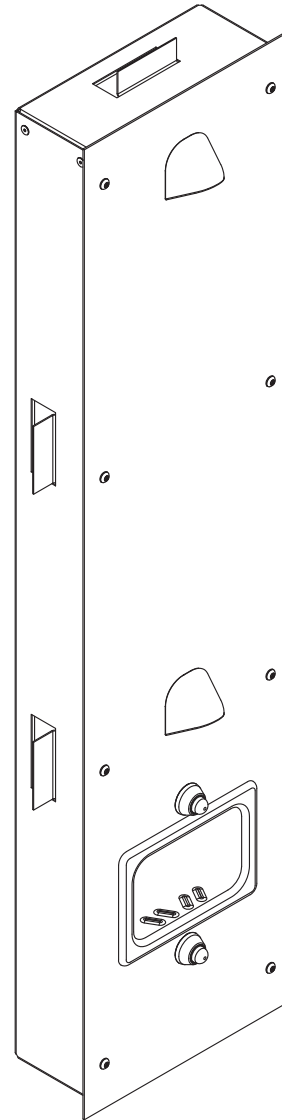
Shower panel shall be fabricated from 14 gauge, Type 304 stainless steel with exposed stainless surfaces polished to a #4 satin finish. Mounting frame shall be fabricated from 18 gauge galvanized steel.

Standard equipment shall include:

- Shower valves (from Valve Selection options list)
- Shower heads (from Shower Head Selection options list)
- In-wall mounting frame

Shower panel shall attach to mounting frame with vandal resistant stainless steel screws. Unit requires no chase area for installation and maintenance.

Optional WaterSense Labeled ligature-resistant shower head available (LRSH).



*(Unit may be shown with optional features)*

To specify fixture and accessories, use the Model Number and Options page.

Example: To specify a Front Mounted, Recessed Handicap Shower Panel w/ Hand Held Flexshower Head with left hand controls, single temp. pneumatic metering valves(manifolded), standard ligature-resistant pneumatic push buttons, standard 2.0 GPM flow rate, standard 2 (LRSH) shower heads, in-line thermostatic mixing valve, and recessed mounted soap dish

Use the following Willoughby Model Number:

**WRS-FA-ADA-PML1-MA2-PBH-2.0GPM-LRSH-2HD-TMV-RD**



**WARNING:** Cancer and Reproductive Harm

- [www.P65Warnings.ca.gov](http://www.P65Warnings.ca.gov)

visit our website at [www.willoughby-ind.com](http://www.willoughby-ind.com)  
5105 West 78th Street • Indianapolis, IN. 46268  
(317) 875-0830 • Fax: (317) 875-0837 • (800) 428-4065



MADE IN THE U.S.A.

# MODEL NUMBER AND OPTIONS:

**1.) Base Model Number:**

WRS-FA-ADA ADA-Compliant, Front Mounted, Recessed Shower Panel

**2.) Panel Orientation (Must Specify if Dual Temp. is Selected):**

L Left Hand Controls  
 R Right Hand Controls

**3.) Valve Selection:**

NV No Valve (Provided by Others)  
 Special Hole Punching Dimension:

PML1 Single Temp. Pneumatic Metering Ⓢ Ⓢ  
 PML2 Dual Temp. Pneumatic Metering Ⓢ Ⓢ  
 E1L1 Single Temp. Electronic (Pick Control)\* Ⓢ Ⓢ  
 E1L2 Dual Temp. Electronic (Pick Control)\* Ⓢ Ⓢ

**Valve Manifold Option:**

*Pneumatic or Electronic Valves Only:*

**(See the Manifold Option Page at the end of Catalog Section 55 for further information)**

MA2

**4.) Push Button Selection:**

*Pneumatic or Electronic Valves Only:*

PBH Ligature-resistant Pneumatic Push Buttons Ⓢ Ⓢ  
 PZPB Ligature-resistant Piezo Electronic Push Buttons\* Ⓢ Ⓢ

**5.) Flow Rates:**

2.5 GPM (Standard)  
 2.0 GPM  
 1.5 GPM

**6.) Electronic Controls\* (Must Use Electronic Push Button):**

WUSC-2200  WUSC-2400  Pneumatic  WMS II

**7.) Shower Head Selection:**

APS Adjustable Vandal-resistant Shower Head  
 NPS Non-Adjustable Vandal-resistant Shower Head Ⓢ  
 UBJ Universal Ball Joint Shower Head (2.0 GPM Flow Rate only)  
 LBJ Lockable Ball Joint Shower Head (2.0 GPM Flow Rate only)  
 CSH Ligature-resistant Shower Head Ⓢ Ⓢ  
 LRSH Ligature-resistant Shower Head, WaterSense Labeled Insert (1.5 GPM & 2.0 GPM Flow Rate only) Ⓢ  
 FX Hand-held Flexshower Head (w/ quick disconnect, vacuum breaker, and (1) hook)  
 LRFX Ligature-resistant Quick Disconnect Hand Held Shower Ⓢ  
 2HD Dual Fixed Shower Heads Ⓢ

**8.) Options:**

FSS Fold-up Stainless Steel Shower Seat Ⓢ  
 HL Hi-Lo (2 Hooks For Flexshower, Wall Mounted)  
 TMV In-line Thermostatic Mixing Valve  
 TF24H Hard-wired Transformer, 110VAC to 24VAC\*  
 TF24P Plug-in Transformer, 110VAC to 24VAC\*  
 RD Recessed Mounted Soap Dish Ⓢ Ⓢ  
 SD Surface Mounted Soap Dish  
 SLB24 24" Adjustable Slide Bar (for Flexshower, Wall Mounted)  
 Other \_\_\_\_\_

\* (Req. 110V power through ground fault interrupter (GFCI) receptacle / breaker)

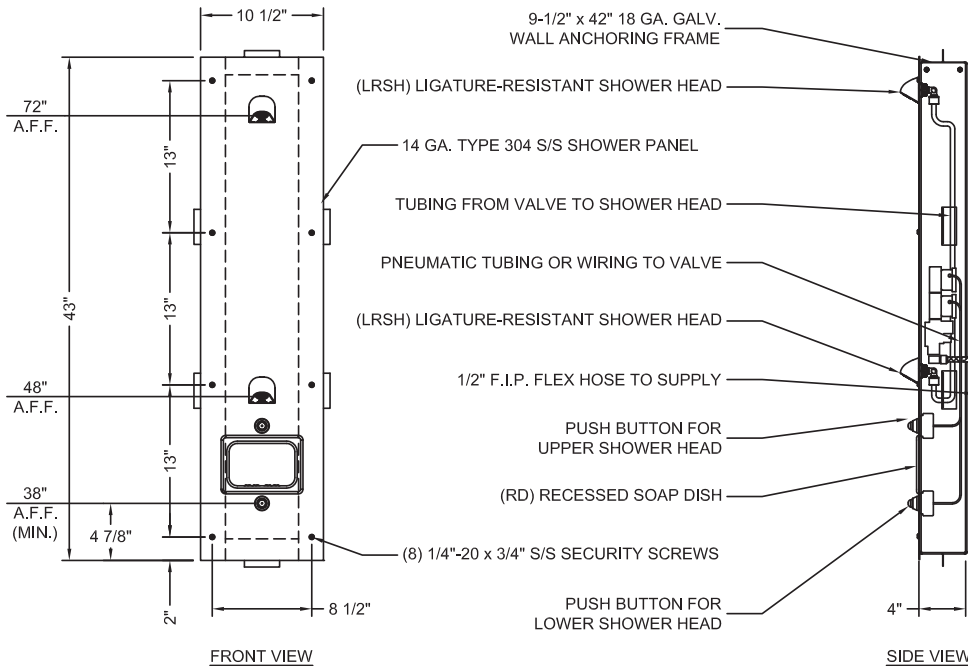
Ⓢ For security applications  
 Ⓢ Ligature-resistant option\*\*

**\*\*LIGATURE-RESISTANT DISCLAIMER**

This product is designed to minimize ligature points. While every effort has been made to reduce the possibility of ligature points, this product does not eliminate all risks. Ligature-Resistant products by Willoughby Industries are to be used in conjunction with, not as a replacement for, trained professionals.

Approved For Manufacturing By: \_\_\_\_\_ Date: \_\_\_\_\_ Company: \_\_\_\_\_  
 Wall Thickness: \_\_\_\_\_ Wall Type: \_\_\_\_\_

**VERIFY ALL DIMENSIONS WITH FACTORY PRIOR TO ROUGH-IN**  
 WILLOUGHBY RESERVES THE RIGHT TO MAKE CHANGES IN DESIGN AND DIMENSIONS WITHOUT FORMAL NOTICE AND WITHOUT INCURRING OBLIGATION.



visit our website at [www.willoughby-ind.com](http://www.willoughby-ind.com)  
 5105 West 78th Street • Indianapolis, IN. 46268  
 (317) 875-0830 • Fax: (317) 875-0837 • (800) 428-4065



MADE IN THE U.S.A.