



# WILLOUGHBY

COUNT ON US.



## COMMERCIAL PRODUCT GUIDE

---

PLUMBING FIXTURES & ACCESSORIES



## Contents

- 03 Introduction
- 04 Bottle Fillers & Drinking Fountains
- 05 Hose Supply Boxes
- 06 Sinks & Lavatories
- 08 Lavatory Systems & Washfountains
- 16 Shampoo Bowls
- 17 Showers & Shower Bases
- 24 Urinals



# WILLOUGHBY

COUNT ON US.

## Thank you for considering products manufactured by Willoughby Industries!

Since our opening in 1947, Willoughby's sole focus has been to provide the finest products in the industry. While our company shifted from sheet metal production to manufacturing commercial plumbing products decades ago, our focus has never wavered.

Willoughby builds all of our products in Indianapolis, Indiana, USA, and—except for a few components—we manufacture all aspects of our products in-house before shipping them across the world. Thanks to the commitment of our craftspeople to research, design, and produce stainless steel and solid surface plumbing products, we manufacture products of the highest quality.

As you consider the selection and use of commercial plumbing fixtures and accessories for your next project, Willoughby respectfully asks for your business. Being a third-generation family-owned business, you can **COUNT ON US** to meet and exceed your expectations!



◀ LEFT: ORIGINAL BUSINESS FRONT

▼ BELOW: CURRENT BUSINESS FRONT



# INTRODUCTION

Willoughby commercial fixtures are built to withstand high-use and occasional abuse in settings, such as schools, stadiums, office buildings, and other commercial settings. These fixtures are exceptionally durable and easy to clean because they are constructed from the following materials:

## Stainless Steel

We design and manufacture all our sprayheads, spouts, and showerheads—and the majority of our fixtures—from high-quality stainless steel. While chrome-plated brass degrades over time, our in-house machining centers allow us to utilize the more durable stainless steel for all necessary product components.



TYPE 304



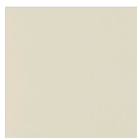
TYPE 316 (MARINE-GRADE)

## AquaSurf® Solid Surface

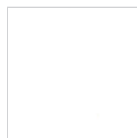
We also utilize AquaSurf® solid surface—a molded, cast polymer densified material composed of polyester/acrylic resin, UV stabilizer, aluminum trihydrate, mineral fillers, proprietary colorant, and antimicrobial additive. This non-porous surface is resistant to stains, burns, and impact. Also, while damage to the surface of this product is rare, it can easily be repaired with a mild abrasive cleaner.



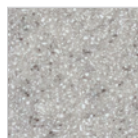
BLACK  
GRANITE



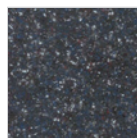
BONE



GLACIER  
WHITE



GREY  
GRANITE



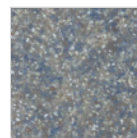
NOCTURNAL  
BLUE



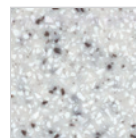
RED CORAL



SANDSTONE



SEA GREEN



WHITE  
GRANITE

## Product Key

Willoughby values providing the best customer-focused service in the industry, every step of the way—whether it is helping plan, install, operate, or maintain our products. In that spirit, we created a quick reference for all our products in this catalog.



ADA  
COMPLIANT



CBC  
COMPLIANT



HANDICAP  
ACCESSIBLE



LEAD-FREE  
PRODUCT



LIGATURE-  
RESISTANT



NYS-OMH  
COMPLIANT



EPA  
WATERSENSE

\*SOME PRODUCTS MAY REQUIRE THE SPECIFICATION OF CERTAIN OPTIONS TO MEET CRITERIA INDICATED IN THIS PRODUCT GUIDE

# BOTTLE FILLERS & DRINKING FOUNTAINS

Willoughby commercial bottle fillers and drinking fountains are vandal-resistant and built to last. These stainless steel fixtures feature all-welded construction for exceptional durability and, when mounted at standard 36" bubbler height, they comply with applicable accessibility guidelines.



## Bottle Filler – Rear Mounted

MODEL: WBF-1RM

The WBF-1RM Rear Mounted Bottle Filler is a heavy-duty, quick-fill bottle filler that helps to reduce the waste from plastic water bottles in areas where vandalism or aggressive use is a concern. The WBF-1RM is anchored by a standard, 4-point system.



## Bottle Filler – Recessed, Front Mounted

MODEL: WBF-1RFM

The WBF-1RFM Recessed, Front Mounted Bottle Filler is a heavy-duty, quick-fill bottle filler that helps to reduce the waste from plastic water bottles in areas where vandalism or aggressive use is a concern. The WBF-1RFM is anchored to the wall by a z-clip and wall-mounting holes.



## Bottle Filler – Surface Mounted

MODEL: WBF-1SM

The WBF-1SM Surface Mounted Bottle Filler is a heavy-duty, quick-fill bottle filler that helps to reduce the waste from plastic water bottles in areas where vandalism or aggressive use is a concern. The WBF-1SM is anchored to the wall by a wall mounting frame attached to the wall.



SCAN QR CODE FOR  
MORE INFORMATION,  
INCLUDING REVIT FILES

SOME PRODUCTS MAY REQUIRE THE SPECIFICATION OF CERTAIN OPTIONS TO MEET CRITERIA INDICATED IN THIS PRODUCT GUIDE





## Drinking Fountain – Small Profile

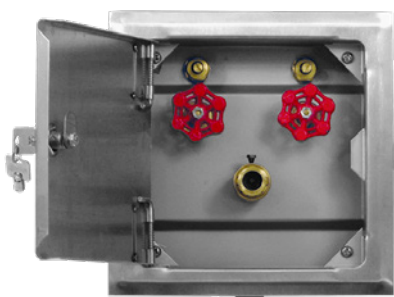
MODEL: DF-1812-FA

The DF-1812-FA Small Profile Drinking Fountain is a front access, single-user fixture for use in schools, airports, parks, and other commercial environments where a mechanical chase is either non-existent or difficult to access.



## HOSE SUPPLY BOXES

Willoughby hose supply boxes are recessed, stainless steel utility fixtures for use in commercial environments.



### Hose Box

MODEL: HB SERIES

The HB Series Hose Box is a recessed utility fixture for use in environments requiring vandal-resistant plumbing access. HB Series fixtures are available in a single- or dual-temperature configuration, as well as with or without a door, vacuum breaker, or waste outlet.



### Hose Box with Wall Flange & Boiler Drain Valve

MODEL: HBBD SERIES

The HBBD Series Hose Box with Wall Flange and Boiler Drain Valve is a recessed utility fixture for use in environments requiring vandal-resistant drain valve access. HBBD Series fixtures are available in a single- or dual-temperature configuration.



# SINKS & LAVATORIES

Willoughby sinks and lavatories are the perfect solution for single- or multi-person usage at schools and other commercial buildings. Constructed from stainless steel or AquaSurf® solid surface material, they are exceptionally durable with a full complement of optional faucets and accessories to accommodate your specific needs.



## Single-Station Hand Sink

MODEL: CES-912

The CES-912 Single-Station Hand Sink is a single-user, stainless steel fixture for vandal-resistant commercial use. Perfect for kitchens or laboratories, standard fixtures come with a rectangular-shaped lavatory bowl and 4-inch center faucet holes. *Faucet supplied by others.*



## Multi-Station Hand Sink

MODEL: CWMES SERIES

The CWMES Series Multi-Station Hand Sink is a multi-user, stainless steel fixture for vandal-resistant commercial use. Perfect for auto-repair facilities, standard fixtures come with a long, rectangular-shaped sink bowl and faucet holes for two to four separate stations. *Faucets supplied by others.*



## Multi-Station Wall Sink

MODEL: CWWS SERIES

The CWWS Series Multi-Station Wall Sink is a multi-user, stainless steel fixture for vandal-resistant commercial use. Perfect for art classrooms, standard fixtures come with a long, rectangular-shaped sink bowl and faucet holes for two to five separate stations. *Faucets supplied by others.*



SCAN QR CODE FOR  
MORE INFORMATION,  
INCLUDING REVIT FILES

SOME PRODUCTS MAY REQUIRE THE SPECIFICATION OF CERTAIN OPTIONS TO MEET CRITERIA INDICATED IN THIS PRODUCT GUIDE



## Island Sink

MODEL: CWIS SERIES

The CWIS Series Island Sink is a multi-user, stainless steel fixture for vandal-resistant commercial use. Perfect for race tracks and stadiums, standard fixtures come with a rectangular-shaped sink bowl, rectangular faucet head assembly, and faucet holes for six or eight separate stations. *Faucets supplied by others.*



## Service Sink

MODEL: CSS-2419

The CSS-2419 Service Sink is a single-user, stainless steel fixture for vandal-resistant commercial use. Perfect for janitorial rooms, standard fixtures come with a deep, rectangular-shaped sink bowl and faucet holes. *Faucet supplied by others.*



## Mop Sink

MODEL: CWMS SERIES

The CWMS Series Mop Sink is a stainless steel utility fixture for vandal-resistant commercial use. Perfect for janitorial rooms, standard fixtures come with a rectangular-shaped sink bowl based on specified dimensions and a caulk drain with a removable strainer.



## Single-Station Lavatory

MODEL: ES-1015-HC

The ES-1015-HC Single-Station Lavatory is a single-user, stainless steel fixture for vandal-resistant commercial use. Perfect for public restrooms, standard fixtures come with a rectangular-shaped lavatory bowl. *Faucet supplied by others.*





## Single-Station Executive Lavatory

MODEL: WEL-2311

The WEL-2311 Single-Station Executive Lavatory is a single-user, solid surface fixture for vandal-resistant commercial use. Perfect for executive offices, standard fixtures come with a rounded, rectangular-shaped lavatory bowl and stainless steel mounting bracket. *Faucet supplied by others.*



## Multi-Station Lavatory

MODEL: CEL SERIES

The CEL Series Multi-Station Lavatory is a multi-user, stainless steel fixture for vandal-resistant commercial use. Perfect for schools, the lavatory is offered in either a two- or three-station configuration. *Powder coating (shown) is an additional option.*



# LAVATORY SYSTEMS & WASHFOUNTAINS

Willoughby lavatory systems and washfountains are the perfect solution when multiple people need to wash their hands at once, such as in schools, stadiums, racetracks, or other commercial building restrooms. Constructed from stainless steel or AquaSurf® solid surface material, they are stylish and durable with a full complement of optional faucets and accessories to accommodate your specific needs.



## Envy Lavatory System – Single Station

MODEL: WELS-2230

The WELS-2230 Single Station, Envy Lavatory System is a contemporary, solid surface fixture for single-user, vandal-resistant commercial use. Perfect for stand-alone ADA use, standard fixtures come with a contoured, single-user lavatory basin made from solid surface. *Faucet supplied by others.*



SCAN QR CODE FOR  
MORE INFORMATION,  
INCLUDING REVIT FILES

SOME PRODUCTS MAY REQUIRE THE SPECIFICATION OF CERTAIN OPTIONS TO MEET CRITERIA INDICATED IN THIS PRODUCT GUIDE



## Envy Lavatory System – Two Station

MODEL: WELS-2260



The WELS-2260 Two Station, Envy Lavatory System is a contemporary, solid surface fixture for multi-user, vandal-resistant commercial use. Perfect for schools and performing art centers, standard fixtures come with a contoured, multi-user lavatory basin made from solid surface. *Faucets supplied by others.*



## Envy Lavatory System – Three Station

MODEL: WELS-2290



The WELS-2290 Three Station, Envy Lavatory System is a contemporary, solid surface fixture for multi-user, vandal-resistant commercial use. Perfect for schools and performing art centers, standard fixtures come with a contoured, multi-user lavatory basin made from solid surface. *Faucets supplied by others.*



## AquaWave® Lavatory System – Single Station

MODEL: WAW-2311



The WAW-2311 Single Station, AquaWave® Lavatory System is a single-user, solid surface fixture for vandal-resistant commercial use. Perfect for stand-alone ADA use, the fixture can be supplied with an optional liquid soap dispenser.



## AquaWave® Lavatory System for Deck Mounted Faucets (DMF) – Single Station

MODEL: WAW-2311-DMF



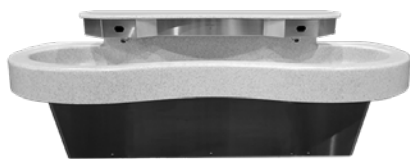
The WAW-2311-DMF Single Station, AquaWave® Lavatory System for Deck Mounted Faucets (DMF) is a single-user, solid surface fixture for vandal-resistant commercial use. Perfect for stand-alone ADA use. *Faucet supplied by others.*



## AquaWave® Lavatory System – Two Station

MODEL: WAW-2322

The WAW-2322 Two Station, AquaWave® Lavatory System is a multi-user, solid surface fixture for vandal-resistant commercial use. Perfect for schools and stadiums, the fixture can be supplied with optional liquid soap dispensers.



## AquaWave® Lavatory System for Deck Mounted Faucets (DMF) – Two Station

MODEL: WAW-2322-DMF

The WAW-2322-DMF Two Station, AquaWave® Lavatory System for Deck Mounted Faucets (DMF) is a multi-user, solid surface fixture for vandal-resistant commercial use. Perfect for schools and stadiums. *Faucets supplied by others.*



## AquaWave® Lavatory System – Three Station

MODEL: WAW-2333

The WAW-2333 Three Station, AquaWave® Lavatory System is a multi-user, solid surface fixture for vandal-resistant commercial use. Perfect for schools and stadiums, the fixture can be supplied with optional liquid soap dispensers.



## AquaWave® Lavatory System for Deck Mounted Faucets (DMF) – Three Station

MODEL: WAW-2333-DMF

The WAW-2333-DMF Three Station, AquaWave® Lavatory System for Deck Mounted Faucets (DMF) is a multi-user, solid surface fixture for vandal-resistant commercial use. Perfect for schools and stadiums. *Faucets supplied by others.*



SCAN QR CODE FOR  
MORE INFORMATION,  
INCLUDING REVIT FILES

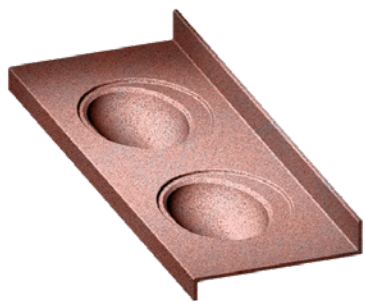
SOME PRODUCTS MAY REQUIRE THE SPECIFICATION OF CERTAIN OPTIONS TO MEET CRITERIA INDICATED IN THIS PRODUCT GUIDE



## AquaDeck® Lavatory Deck – 1.5" Square Front

MODEL: WAD-2230

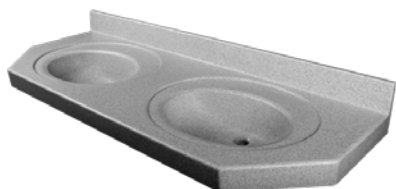
The WAD-2230 1.5" Square Front, AquaDeck® Lavatory Deck is a single- or multi-user, solid surface fixture for commercial use. Perfect for offices, the fixture features a 1.5" square-eased front edge and straight sides, and can be ordered with up to four separate, integral wash stations. *Faucets supplied by others.*



## AquaDeck® Lavatory Deck – 3" Square Front

MODEL: WAD-2235

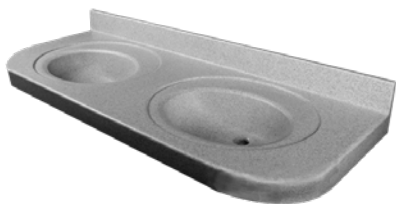
The WAD-2235 3" Square Front, AquaDeck® Lavatory Deck is a single- or multi-user, solid surface fixture for commercial use. Perfect for offices, the fixture features a 3" square-eased front edge and straight sides, and can be ordered with up to four separate, integral wash stations. *Faucets supplied by others.*



## AquaDeck® Lavatory Deck – Angled Front

MODEL: WAD-2240

The WAD-2240 Angled Front, AquaDeck® Lavatory Deck is a single- or multi-user, solid surface fixture for commercial use. Perfect for offices, the fixture features 45° angled front corners with matching sides and eased edges, and can be ordered with up to four separate, integral wash stations. *Faucets supplied by others.*



## AquaDeck® Lavatory Deck – Radiused Front

MODEL: WAD-2250

The WAD-2250 Radiused Front, AquaDeck® Lavatory Deck is a single- or multi-user, solid surface fixture for commercial use. Perfect for offices, the fixture features R.6" radiused front corners with matching sides and eased edges, and can be ordered with up to four separate wash stations. *Faucets supplied by others.*





## AquaDeck® Lavatory Deck – Contoured Front

MODEL: WAD-2260

The WAD-2260 Contoured Front, AquaDeck® Lavatory Deck is a single- or multi-user, solid surface fixture for vandal-resistant commercial use. Perfect for offices, the fixture features a contoured front apron with eased edges and can be ordered with up to two separate, integral wash stations. *Faucets supplied by others.*



## Lavatory Deck – Straight Front

MODEL: CWLD SERIES

The CWLD Series Straight Front Lavatory Deck is a single- or multi-user, stainless steel fixture for vandal-resistant commercial use. Perfect for transitional housing units, standard fixtures come with circular or oval lavatory bowls in one to four separate stations. Can be supplied with or without faucets.



## Lavatory Deck – Round Front

MODEL: CWLDR SERIES

The CWLDR Series Round Front Lavatory Deck is a single- or multi-user, stainless steel fixture for vandal-resistant commercial use. Perfect for transitional housing units, standard fixtures come with circular lavatory bowls in one to four separate stations. Can be supplied with or without faucets.



## AquaFount® Washfountain – Two Station, Corner Mounted

MODEL: WAF-2200/2201

The WAF-2200/2201 Two Station, AquaFount® Washfountain is a corner-mounted, solid surface fixture for multi-user, vandal-resistant commercial use. Perfect for schools, fixtures are offered in either a floor or wall mounted configuration.



SCAN QR CODE FOR  
MORE INFORMATION,  
INCLUDING REVIT FILES

SOME PRODUCTS MAY REQUIRE THE SPECIFICATION OF CERTAIN OPTIONS TO MEET CRITERIA INDICATED IN THIS PRODUCT GUIDE



## AquaFount® Washfountain – Three Station

MODEL: WAF-3300/3301

The WAF-3300/3301 Three Station, AquaFount® Washfountain is a multi-user, solid surface fixture for vandal-resistant commercial use. Perfect for schools, fixtures are offered in either a floor or wall mounted configuration.



## AquaFount® Washfountain – Four Station

MODEL: WAF-4400/4401

The WAF-4400/4401 Four Station Washfountain is a multi-user, solid surface fixture for vandal-resistant commercial use. Perfect for schools, fixtures are offered in either a floor or wall mounted configuration.



## Half Round Washfountain – 36" Three Station

MODEL: WAF-3603

The WAF-3603 36" Three Station, Half Round Washfountain is a multi-user, solid surface fixture for vandal-resistant commercial use. Perfect for art classrooms, the fixture can be supplied with optional liquid soap dispensers.



## Half Round Washfountain – 36" Three Station

MODEL: WWF-3603

The WWF-3603 36" Three Station, Half Round Washfountain is a multi-user, stainless steel fixture for vandal-resistant commercial use. Perfect for industrial use, the fixture can be supplied with optional liquid soap dispensers.







## Half Round Washfountain – 42” Three/Four Station

MODEL: WWF-4203/4204

The WWF-4203/4204 42” Three/Four Station, Half Round Washfountain is a multi-user, stainless steel fixture for vandal-resistant commercial use. Perfect for industrial use, fixtures are offered in either a three or four station configuration.



## Half Round Washfountain – 54” Three/Four Station

MODEL: WAF-5403/5404

The WAF-5403/5404 54” Three/Four Station, Half Round Washfountain is a multi-user, solid surface fixture for vandal-resistant commercial use. Perfect for art classrooms, fixtures are offered in either a three- or four-station configuration.



## Half Round Washfountain – 54” Three/Four Station

MODEL: WWF-5403/5404

The WWF-5403/5404 54” Three/Four Station, Half Round Washfountain is a multi-user, stainless steel fixture for vandal-resistant commercial use. Perfect for industrial use, fixtures are offered in either a three- or four-station configuration.



## Full Round Washfountain – 36” Six Station

MODEL: WAF-3606

The WAF-3606 36” Six Station, Full Round Washfountain is a floor-mounted, multi-user fixture constructed from solid surface and intended for vandal-resistant commercial use. Perfect for race tracks and stadiums, the fixture can be supplied with optional liquid soap dispensers and a telescoping shroud.



SCAN QR CODE FOR  
MORE INFORMATION,  
INCLUDING REVIT FILES

SOME PRODUCTS MAY REQUIRE THE SPECIFICATION OF CERTAIN OPTIONS TO MEET CRITERIA INDICATED IN THIS PRODUCT GUIDE



## Full Round Washfountain – 36” Six Station

MODEL: WWF-3606

The WWF-3606 36” Six Station, Full Round Washfountain is a floor-mounted, multi-user fixture constructed from stainless steel and intended for vandal-resistant commercial use. Perfect for industrial use, the fixture can be supplied with optional liquid soap dispensers and a telescoping shroud.



## Full Round Washfountain – 42” Six Station

MODEL: WWF-4206

The WWF-4206 42” Six Station, Full Round Washfountain is a floor-mounted, multi-user fixture constructed from stainless steel and intended for vandal-resistant commercial use. Perfect for industrial use, the fixture can be supplied with optional liquid soap dispensers and a telescoping shroud.



## Full Round Washfountain – 54” Six/Eight Station

MODEL: WAF-5406/5408

The WAF-5406/5408 54” Six/Eight Station, Full Round Washfountain is a multi-user, solid surface fixture for vandal-resistant commercial use. Perfect for race tracks and stadiums, fixtures are offered in either a six- or eight-station configuration.



## Full Round Washfountain – 54” Six/Eight Station

MODEL: WWF-5406/5408

The WWF-5406/5408 54” Six/Eight Station, Full Round Washfountain is a floor-mounted, multi-user fixture constructed from stainless steel and intended for vandal-resistant commercial use. Perfect for industrial use, fixtures are offered in either a six- or eight-station configuration.



# SHAMPOO BOWLS

Willoughby shampoo bowls are the perfect solution for salons, assisted living facilities, and barbershops that desire superior comfort and functionality at an affordable price. Constructed from stainless steel or AquaSurf® solid surface material, they are exceptionally durable and offer a full complement of optional faucets and accessories to accommodate your specific needs.



## Shampoo Bowl – 18" Wide

MODEL: SB-1823

The SB-1823 Shampoo Bowl is a single-user, stainless steel fixture for vandal-resistant commercial use. The shampoo bowl can be supplied with an optional faucet kit that includes a single-handle adjustable faucet, handheld sprayer, and fixture-mounted vacuum breaker.



## Shampoo Bowl – 18" Wide

MODEL: WSB-1911

The WSB-1911 18" Wide Shampoo Bowl is a single-user, solid surface fixture for vandal-resistant commercial use. The shampoo bowl can be supplied with an optional faucet kit that includes a single-handle adjustable faucet, handheld sprayer, and fixture-mounted vacuum breaker.



## Shampoo Bowl – 22" Wide

MODEL: WSB-2111

The WSB-2111 22" Wide Shampoo Bowl is a single-user, solid surface fixture for vandal-resistant commercial use. The shampoo bowl can be supplied with an optional faucet kit that includes a single-handle adjustable faucet, handheld sprayer, and fixture-mounted vacuum breaker.



SCAN QR CODE FOR  
MORE INFORMATION,  
INCLUDING REVIT FILES

SOME PRODUCTS MAY REQUIRE THE SPECIFICATION OF CERTAIN OPTIONS TO MEET CRITERIA INDICATED IN THIS PRODUCT GUIDE

# SHOWERS & SHOWER BASES

Willoughby showers and shower bases are ideal for schools, health clubs, locker rooms, campgrounds, or any other public shower facility. Constructed from stainless steel or AquaSurf® solid surface material, they are vandal-resistant, stylish, and durable for those who desire superior functionality at an affordable price.



## Surface Mounted Wall Shower

MODEL: CWSMS SERIES

The CWSMS Series Surface Mounted Wall Shower is a single-user, stainless steel fixture. Standard fixtures come with your choice of shower head and valve assembly.



## Surface Mounted Wall Shower – Handicap Accessible

MODEL: CWSMS-HCA SERIES

The CWSMS-HCA Series Surface Mounted Wall Shower is a single-user, stainless steel fixture. Standard fixtures come with your choice of shower heads and valve assemblies.



## Surface Mounted Wall Shower – ADA Compliant

MODEL: CWSMS-ADA SERIES

The CWSMS-ADA Series Surface Mounted Wall Shower is a single-user, stainless steel fixture. Standard fixtures come with a handheld flexshower head and 24" slide bar. *Hand-held flexshower head and adjustable slide bar for flexshower (shown) are additional options.*



SOME PRODUCTS MAY REQUIRE THE SPECIFICATION OF CERTAIN OPTIONS TO MEET CRITERIA INDICATED IN THIS PRODUCT GUIDE

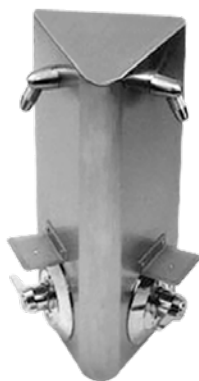




## Surface Mounted Wall Shower – Wide Housing, ADA Compliant

MODEL: CWSMS-ADA-WH SERIES

The CWSMS-ADA-WH Series Wide Housing, Surface Mounted Wall Shower is a single-user, stainless steel fixture. Standard fixtures come with your choice of two shower heads and valve assemblies.



## Surface Mounted Wall Shower – Two Station

MODEL: CWDS SERIES

The CWDS Series Two Station, Surface Mounted Wall Shower is a two-user fixture. Standard fixtures come with your choice of shower head and valve assembly at each shower station.



## Surface Mounted Wall Shower – Two Station, Handicap Accessible

MODEL: CWDS-HCA SERIES

The CWDS-HCA Series Two Station, Surface Mounted Wall Shower is a two-user fixture. Standard fixtures come with your choice of two shower heads at one shower station and one shower head at the other.



## Surface Mounted Wall Shower – Three Station

MODEL: CWTS SERIES

The CWTS Series Three Station, Surface Mounted Wall Shower is a three-user fixture. Standard fixtures come with your choice of shower head and valve assembly at each shower station.



SCAN QR CODE FOR  
MORE INFORMATION,  
INCLUDING REVIT FILES

SOME PRODUCTS MAY REQUIRE THE SPECIFICATION OF CERTAIN OPTIONS TO MEET CRITERIA INDICATED IN THIS PRODUCT GUIDE





## Surface Mounted Wall Shower – Three Station, Handicap Accessible

MODEL: CWTS-HCA SERIES

The CWTS-HCA Series Three Station, Surface Mounted Wall Shower is a three-user fixture. Standard fixtures come with your choice of two shower heads at one shower station and one shower head at the others.



## Surface Mounted Wall Shower – Hinged

MODEL: CWSMSH SERIES

The CWSMSH Series Hinged, Surface Mounted Wall Shower is a single-user, stainless steel fixture. Standard fixtures come with your choice of shower head and valve assembly, with anchoring through two cabinet hinges.



## Surface Mounted Wall Shower – Hinged, Handicap Accessible

MODEL: CWSMSH-HCA SERIES

The CWSMSH-HCA Series Hinged, Surface Mounted Wall Shower is a single-user, stainless steel fixture. Standard fixtures come with your choice of two shower heads and valve assemblies, with anchoring through three cabinet hinges.



## Surface Mounted Wall Shower – Corner

MODEL: CWKS SERIES

The CWKS Series Corner Surface Mounted Wall Shower is a single-user fixture. Standard fixtures come with your choice of shower head and valve assembly.





## Surface Mounted Wall Shower – Corner, Handicap Accessible

MODEL: CWKS-HCA SERIES

The CWKS-HCA Series Corner Surface Mounted Wall Shower is a single-user fixture. Standard fixtures come with your choice of two shower heads and valve assemblies.



## Type Y Column Shower – 2-6 Station

MODEL: CWCSY SERIES

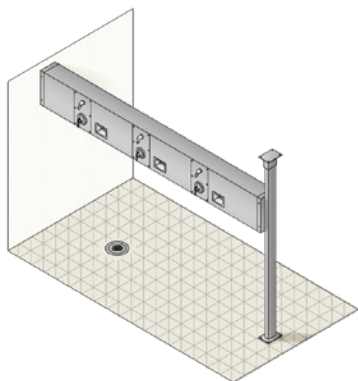
The CWCSY Series 2-6 Station, Type Y Column Shower is a multi-user, stainless steel fixture. Standard fixtures come with your choice of shower head and valve assembly at each shower station.



## Continuous Wall Shower

MODEL: CWCWS SERIES

The CWCWS Series Continuous Wall Shower is a multi-user, stainless steel fixture. Standard fixtures come with your choice of shower head and valve assembly at each shower station.



## Continuous Wall Shower – Back-to-Back

MODEL: CWBTBS SERIES

The CWBTBS Series Back-to-Back, Continuous Wall Shower is a multi-user, stainless steel fixture. Standard fixtures come with your choice of shower head and valve assembly at each shower station.



SCAN QR CODE FOR  
MORE INFORMATION,  
INCLUDING REVIT FILES

SOME PRODUCTS MAY REQUIRE THE SPECIFICATION OF CERTAIN OPTIONS TO MEET CRITERIA INDICATED IN THIS PRODUCT GUIDE

## Roll-in Shower Base – 30" × 60" with Integral Rear Trench Drain

MODEL: AS-S3060ADA



The AS-S3060ADA 30" × 60" Roll-in Shower Base with Integral Rear Trench Drain is a single-user, solid surface fixture for use in commercial environments. The rear drain is available in left, center, or right configurations.



## Roll-in Shower Base – 30" × 60" with Integral Front Trench Drain

MODEL: AS-S3060ADAF



The AS-S3060ADAF 30" × 60" Roll-in Shower Base with Integral Front Trench Drain is a single-user, solid surface fixture for use in commercial environments. The front drain is available in left, center, or right configurations.



## Transfer Shower Base – 36" × 36" with Integral Rear Trench Drain

MODEL: AS-S3636ADA



The AS-S3636ADA 36" × 36" Transfer Shower Base with Integral Rear Trench Drain is a single-user, solid surface fixture for use in commercial environments. The rear drain is available in left, center, or right configurations.



## Transfer Shower Base – 36" × 36" with Integral Front Trench Drain

MODEL: AS-S3636ADAF



The AS-S3636ADAF 36" × 36" Transfer Shower Base with Integral Front Trench Drain is a single-user, solid surface fixture for use in commercial environments. The front drain is available in left, center, or right configurations.





## Shower Base – Corner, Neo-Angle

MODEL: AS SERIES

The AS Series Neo-Angle, Corner Shower Base is a single-user, solid surface fixture for use in commercial environments. The AS Series shower bases can be ordered in either a 36" x 36" or 42" x 42" configuration.



## Shower Base – Corner, Round

MODEL: AS SERIES

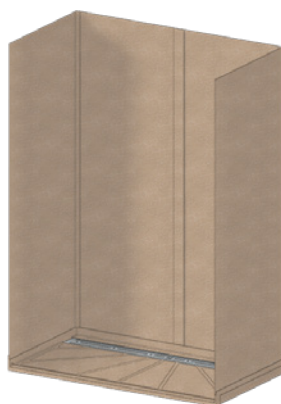
The AS Series Round, Corner Shower Base is a single-user, solid surface fixture for use in commercial environments. The AS Series shower bases can be ordered in a 36" x 36" configuration.



## Shower Base – Curbed, Square & Rectangular

MODEL: AS SERIES

The AS Series Curbed Shower Base is a single-user, solid surface fixture for use in commercial environments. The AS Series shower bases can be ordered in either a 36" x 36", 36" x 48", or 36" x 60" configuration—all with square or rectangular profiles.



## Shower Wall Panel Kit

MODEL: ASK SERIES

The Shower Wall Panel Kit allows for a complete shower installation with color-matched, solid surface wall panel sections. Additional options include soap dishes and shelves.



SCAN QR CODE FOR  
MORE INFORMATION,  
INCLUDING REVIT FILES

SOME PRODUCTS MAY REQUIRE THE SPECIFICATION OF CERTAIN OPTIONS TO MEET CRITERIA INDICATED IN THIS PRODUCT GUIDE



## Shower Head – User Adjustable

MODEL: APS SERIES

The APS Series User Adjustable Shower Head shall have a 30° angle of spray with a spray pattern adjustable by the user. Offered with a 17° angle of spray.



## Shower Head – Non-Adjustable

MODEL: NPS SERIES

The NPS Series Non-Adjustable Shower Head shall have a 30° angle of spray with a spray pattern adjustable by the facility using an Allen wrench. Offered with a 17° angle of spray. *Allen wrench not provided.*



## Shower Head – Universal Ball Joint

MODEL: UBJ SERIES

The UBJ Series Universal Ball Joint Shower Head is constructed of chrome-plated brass. The spray direction is adjustable by the user.



## Shower Head – Lockable Ball Joint

MODEL: LBJ SERIES

The LBJ Series Lockable Ball Joint Shower Head is constructed of chrome-plated brass. The spray direction can be locked in position by the facility using an Allen wrench and the provided recessed set screw. *Allen wrench not provided.*







## Shower Head – Ligature-Resistant

MODEL: CSH SERIES

The CSH Series Ligature-Resistant Shower Head is machined from stainless steel and has a 30° angle of spray through a Delrin insert retained by a stainless steel, Pin-Torx security screw. The entire unit has a rounded and tapered design to minimize any potential ligature points. Offered with a 17° angle of spray.



## Shower Head – Ligature-Resistant, High-Efficiency

MODEL: LRSH SERIES

The LRSH Series Ligature-Resistant, High-Efficiency Shower Head has a rounded and tapered design to minimize any potential ligature points. The shower head offers a 30° angle of spray—with a 14° maximum swivel adjustment—and a standard flow rate of 1.5 GPM through the WaterSense-certified insert.



# URINALS

Willoughby urinals—constructed from stainless steel—offer a durable and sanitary solution for parks, racetracks, and other commercial building restrooms. The various urinal styles are available in several configurations, including single- and multi-person options.



## Washout Flush Urinal – Front Mounted, Contoured

MODEL: UW-1317-HEU-FA

The UW-1317-HEU-FA Washout Flush Urinal is a high-efficiency, front-mounted, contoured fixture for use in commercial environments.



SCAN QR CODE FOR  
MORE INFORMATION,  
INCLUDING REVIT FILES

SOME PRODUCTS MAY REQUIRE THE SPECIFICATION OF CERTAIN OPTIONS TO MEET CRITERIA INDICATED IN THIS PRODUCT GUIDE



## Washout Flush Urinal – Rear Mounted, Contoured

MODEL: UW-1317-HEU

The UW-1317-HEU Washout Flush Urinal is a high-efficiency, rear-mounted, contoured fixture for use in commercial environments.



## Washout Flush Urinal – Front Mounted, Contoured, Ligature-Resistant

MODEL: ASUW-1314-HEU-FA

The ASUW-1314-HEU-FA Washout Flush Urinal is a high-efficiency, front-mounted, contoured fixture for use in commercial environments. The single-user fixture has been thoughtfully designed to minimize any potential ligature points.



## Washout Flush Urinal – Rear Mounted, Contoured, Ligature-Resistant

MODEL: ASUW-1314-HEU

The ASUW-1314-HEU Washout Flush Urinal is a high-efficiency, rear-mounted, contoured fixture for use in commercial environments. The single-user fixture has been thoughtfully designed to minimize any potential ligature points.



## Washout Flush Urinal – Front Mounted, Straddle

MODEL: UW-1412-WO-FA

The UW-1412-WO-FA Washout Flush Urinal is a single-user, front-mounted, straddle-type fixture for use in commercial environments.





## Washout Flush Urinal – Rear Mounted, Straddle

MODEL: UW-1412-WO

The UW-1412-WO Washout Flush Urinal is a single-user, rear-mounted, straddle-type fixture for use in commercial environments.



## Blowout Flush Urinal – Rear Mounted, Straddle

MODEL: UW-1412-BJ

The UW-1412-BJ Blowout Flush Urinal is a single-user, rear-mounted, straddle-type fixture for use in commercial environments.



## Washout Flush Urinal – Front Mounted, Trough

MODEL: UW-1814-WO-FA

The UW-1814-WO-FA Washout Flush Urinal is a single-user, front-mounted, trough-type fixture for use in commercial environments.



## Washout Flush Urinal – Rear Mounted, Trough

MODEL: UW-1814-WO

The UW-1814-WO Washout Flush Urinal is a single-user, rear-mounted, trough-type fixture for use in commercial environments.



SCAN QR CODE FOR  
MORE INFORMATION,  
INCLUDING REVIT FILES

SOME PRODUCTS MAY REQUIRE THE SPECIFICATION OF CERTAIN OPTIONS TO MEET CRITERIA INDICATED IN THIS PRODUCT GUIDE



## Blowout Flush Urinal – Rear Mounted, Trough

MODEL: UW-1814-BJ

The UW-1814-BJ Blowout Flush Urinal is a single-user, rear-mounted, trough-type fixture for use in commercial environments.



## Washout Flush Urinal – Front Mounted, Trough

MODEL: UW-1800-FA SERIES

The UW-1800-FA Series Washout Flush Urinal is a multi-user, front-mounted, trough-type fixture for use in commercial environments. The fixture is available in several lengths to meet your needs.



## Washout Flush Urinal – Rear Mounted, Trough

MODEL: UW-1800 SERIES

The UW-1800 Series Washout Flush Urinal is a multi-user, rear-mounted, trough-type fixture for use in commercial environments. The fixture is available in several lengths to meet your needs.





5105 West 78th Street, Indianapolis, IN 46268  
toll free 800.428.4065 • fax 317.875.0837  
[www.willoughby-ind.com](http://www.willoughby-ind.com)

